

## **Trade-In Equipment Terms, Conditions & Limitations**

**At the time a vehicle is turned in, it must be capable of passing any applicable state and federal safety and emissions inspection. It must also meet or exceed the following Terms and Conditions. These requirements have been carefully defined to establish the operating condition of a used truck, as agreed to by both the seller and the buyer.**

### **General**

1. The purchaser reserves the right to inspect the vehicle prior to the trade-in date.
2. All standard and optional equipment, on or in truck chassis, must be in good working order, must be roadworthy, and must be on the truck as delivered.
3. Truck must pass DOT inspection and be able to go in service without any repairs.
4. Any unit that has been wrecked and sustained damages greater than 15% of the original contract price must be disclosed. **The purchaser reserves the right to reject any and all units that have not been repaired in accordance with acceptable standards or workmanship.**
5. Units (including bodies) must be maintained in accordance to the original manufacturer's published maintenance requirements. At the sole discretion of Ingram Equipment Co., LLC., proof of maintenance may be required before unit turn-in.
6. Vehicles must have a minimum of twenty (20) gallons of fuel at turn-in time.

### **Documents**

1. A current Federal Annual and State (if applicable) inspection sticker valid for at least 120 days after the date of return must be on vehicle at time of delivery.
2. Payment for the truck will not be made until Ingram Equipment Company, LLC receives clear title/ownership. Truck must be free and clear of all liens and encumbrances.

### **Engine**

1. Engine must be the original engine produced in the truck. If the engine has been replaced, owner must identify it as such and valuation may be altered based on engine age, mileage and other factors.
2. Engine must operate at a minimum of 80% of the original manufacturer's rated horsepower after allowing for driveline losses and as verified by a chassis dynamometer test.
3. Engine must be mechanically sound and within the manufacturer's specifications relating to oil pressure, coolant temperature and pressure and fuel pressure. Engine must have no leaks and be free from contamination. Crankcase blow-by must be within specification. Engine password must be cleared.
4. Engine air compressor must meet the manufacturer's performance specifications and must not exceed the manufacturer's maximum tolerances for oil blow-by (oil blown into the air system).
5. Batteries, starter, alternator and other ignition system components must be in sound condition. Batteries must be original CCA rating, capable of holding a charge and start the truck unassisted.
6. Air conditioning compressor must be operational and system must be free from defects and operate as intended.

### **Drivetrain**

1. Clutch, Transmission, front and rear axles must be roadworthy and free from defects with no visible bends, cracks or leaks.
2. The clutch must be in adjustment or must be replaced if it cannot be adjusted to within acceptable tolerances.
3. Allison automatic transmission must shift smoothly and operate as originally intended.

## **Trade-In Equipment Terms, Conditions & Limitations**

### **Brakes**

1. Brake linings must have at least 50% remaining wear. Brake drums must be free from breaks or cracks and cannot be worn in excess.

### **Tires**

1. Steer: Matched original equipment tread type tires. Minimum 9/32" tread depth measured at the lowest point. Recaps are not acceptable.
2. Drive: Matched original equipment tread type tires. Minimum 12/32" tread depth measured at the lowest point. Recaps are acceptable – must be first time recapped casings
3. All tires must be free from cuts, bulges, gouges and have no irregular tread wear pattern, such as dishing, cupping, edging, feathering, etc.

### **Cab / Bodies and Equipment**

1. Paint and/or body damage must not exceed \$500.00 total per unit, including, but not limited to, the sheet metal, bumper, grill, fuel tanks, fairings, dents, rust damage, etc, etc.
2. All decals, permits, unit numbers and any other customer installed identification must be removed and done so in a manner as to not damage the original paint. Any damage resulting from de-identifying the truck must be repaired.
3. Upholstery must be free from tears or open seams. Tears, open seams, holes and punctures must be repaired.
4. All glass shall be free from cracks, chips and scratches.
5. Dash panel and interior trim pieces must not be missing and must be free from holes, cracks and/or breaks.
6. All instruments, gauges, warning lights, radio, switches and knobs must be free from defect and operate as originally intended.
7. Bodies such as dump, refuse, flatbed, etc must be free from defects and perform as originally designed for by the manufacturer.
8. There shall be no leaks of the hydraulic system.
9. Any repairs performed on body, including its hydraulic system, must be made with original equipment parts.

## *Environmental Equipment Experts*

### BATTERIES:

- ☐ Battery & Cable Condition

### TIRES & WHEELS:

- ☐ Missing Valve Caps / Tighten Stem Locks
- ☐ Cracks Or Loose Wheel Lugs
- ☐ Tandem Mating / Tire Clearance

### ENGINE OIL CHANGE / CHASSIS LUBE

- ☐ Engine Oil Analysis –Take Sample (See PM Service Work Authorization)
- ☐ Remove Engine Oil Pan Drain Plug / Drain Oil
- ☐ Inspect Engine Oil Drain Plug for Debris
- ☐ Verify Replacement Filters Part Numbers
- ☐ Lubricate Door Hinges & Latches
- ☐ Chassis Lubrication / 5th Wheel / Drive Line / Fan Hub

### UNDER VEHICLE:

- ☐ Rear Axle Leaks & Lubricant Level
- ☐ Rear Axle Breathers – Clear
- ☐ Drive Lines – U-Joints & Slip Yokes
- ☐ Brake Hoses
  
- ☐ Irregular Wear / Air Leaks
  
- ☐ Tire Pressure (Record in Space Provided at Top Right)
  
- ☐ Remaining Tread (Record in Space Provided at Top Right)
  - Transmission Leaks & Lubricant Level
  - Engine Oil Pan Plug - Reinstall
  - Steering Gear – Cracks & Leaks, Mounting brackets loose fasteners
  - Steering Shaft Splines & Joint(s)
  - Pitman Arm
  - Drag Link
  - Steering Arms
  - Tie Rod Arms
  - Tie Rod Ends
  - Radius Rods / Torque Arms
  - Spring Shackles & Hanger Brackets
  - King Pin Wear
  - Spring Leaves / Shocks / Air Bags
  - Front Hub Lubricant Level / Leaks

Cost: \$5,895.00 per unit, per year (does not include travel costs). ACCEPTED: \_\_\_\_\_

Please note: Our team will address any warranty issues on your behalf within the guidelines of your warranty terms. Additionally, any damaged and/or worn parts will be addressed and quoted for immediate repair. Approval will be needed to any additional repair work that is not part of this Service Agreement.

## ***Environmental Equipment Experts***



**Ingram Equipment Company, since 1979, is a family owned and operated company. We are your Environmental Equipment Experts!**

**Our Core Values:** Teamwork, Integrity, Excellence, Proactive Hard Work, Service, Win/Win Transactions, Positive Attitude, Social Responsibility.

**80% of equipment failures can be prevented by better maintenance procedures.**

### **Service Agreement – Body Inspection for Rear Loaders – 90 Day Cycle**

#### **Each service:**

- ☐ Complete exterior inspection of body & internal weldments.
- ☐ Function test battery disconnect switch.
- ☐ Inspect battery box condition, mounting brackets, hold-downs, terminals, cables and fluid levels.
- ☐ Inspect condition of body props & alarms.
- ☐ Inspect all safety switches & adjust as needed.
- ☐ Inspect condition of handles, steps & ladders.
- ☐ Inspect & adjust control linkage as needed.
- ☐ Grease entire unit with special attention to weldments & tracks.
- ☐ Replace grease fittings as needed.
- ☐ Inspect for abnormal wear to pins, bushings & wear pads.
- ☐ Inspect cylinders for leaks & rod end damage.
- ☐ Inspect all steel lines & hoses for wear, leaks & to ensure proper routing and clamps.
- ☐ Inspect operation of all lights & electrical functions.
- ☐ Inspect wiring harness for damage.
- ☐ Inspect tailgate seal.
- ☐ Inspect reeving cylinder system (if applicable).
- ☐ Inspect the operation of tailgate locks.
- ☐ Inspect body mounts.
- ☐ Inspect the operation of all valves, blocks and tippers (if applicable).
- ☐ Check for proper detent, pressures and overall cycle times.
- ☐ Inspect operation of pump & PTO.
- ☐ Reset all pressures as needed.
- ☐ Check chassis coolant levels, inspect engine compartment and drivetrain for leaks.
- ☐ Inspect for correct operation of all chassis lights.
- ☐ Inspect condition of hydraulic fluid & sight glass.
- ☐ Every 90-days install new hydraulic filter. "OIL SAMPLE TAKEN".
- ☐ Every 6-months install new tailgate seal.
- ☐ Every 12-months install new hydraulic fluid, filters & sight glass.

## *Environmental Equipment Experts*

### **Service Agreement – Chassis Addendum – 90 day cycle – Scope of Work**

- ☐ Physical Damage, Sheet Metal, Frame & X-members
- ☐ Grill & Radiator, Wheels, Bumpers
- ☐ Air Leaks
- ☐ Headlights – High & Low Beams
- ☐ Road Lights
- ☐ Clearance Lights / Reflectors
- ☐ Turn Lights
- ☐ Brake Lights
- ☐ Emergency Flasher
- ☐ Backup / Load Lights
- ☐ License Plates, Permits & Mounting
- ☐ Mud Flaps / Serviceable
- ☐ Fuel Tank Mounting / Filler Cap in Place
- ☐ Fuel Crossover Line (Droop, Damage) If equipped
- ☐ Fuel Leaks
- ☐ Exhaust System-Condition, Leaks & Mounting Bolts

#### **INITIAL DRIVE IN:**

- ☐ Clutch Pedal Free Travel
- ☐ Glass for Cracks or Chips
- ☐ Interior Lights
- ☐ Cranking System Operation
- ☐ Gauges / Warning Lights – Illumination / Operational:
- ☐ Maintain Low Idle
- ☐ Oil Pressure
- ☐ Low Air Pressure Warning Devices
- ☐ Air Cleaner Restriction Gauge
- ☐ Electronic Warning Module / A&B Cluster Lights On/Off
- ☐ Windshield Wiper / Washer Condition & Operation
- ☐ Horns (Electric & Air)
- ☐ Mirrors / Heated / Motorized Operation
- ☐ Service Indicator Reset
- ☐ Drain Water from Air Tanks

#### **REAR FRAME:**

- ☐ 5th Wheel Mounting & Condition / Check Adjustment / Handle Locked
- ☐ Air Lines & Glad-hands
- ☐ Trailer Light Cord & Connectors
- ☐ Pintle – Hook / Eye Mounting & Condition
- ☐ Inner & Outer Hub Seals Leaks
- ☐ Spring Shackles & Hanger Brackets
- ☐ Spring Leaves / Bushings / Shocks / Air Bags
  
- ☐ Radius Rods / Torque Arms

## *Environmental Equipment Experts*

### BATTERIES:

- ☐ Battery & Cable Condition

### TIRES & WHEELS:

- ☐ Missing Valve Caps / Tighten Stem Locks
- ☐ Cracks Or Loose Wheel Lugs
- ☐ Tandem Mating / Tire Clearance

### ENGINE OIL CHANGE / CHASSIS LUBE

- ☐ Engine Oil Analysis –Take Sample (See PM Service Work Authorization)
- ☐ Remove Engine Oil Pan Drain Plug / Drain Oil
- ☐ Inspect Engine Oil Drain Plug for Debris
- ☐ Verify Replacement Filters Part Numbers
- ☐ Lubricate Door Hinges & Latches
- ☐ Chassis Lubrication / 5th Wheel / Drive Line / Fan Hub

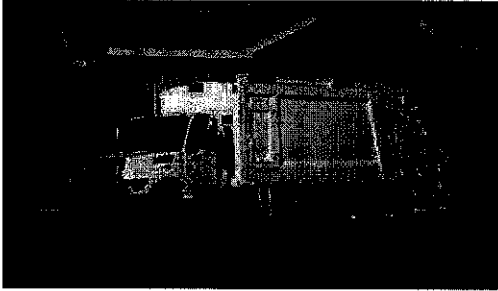
### UNDER VEHICLE:

- ☐ Rear Axle Leaks & Lubricant Level
- ☐ Rear Axle Breathers – Clear
- ☐ Drive Lines – U-Joints & Slip Yokes
- ☐ Brake Hoses
  
- ☐ Irregular Wear / Air Leaks
  
- ☐ Tire Pressure (Record in Space Provided at Top Right)
  
- ☐ Remaining Tread (Record in Space Provided at Top Right)
  - Transmission Leaks & Lubricant Level
  - Engine Oil Pan Plug - Reinstall
  - Steering Gear – Cracks & Leaks, Mounting brackets loose fasteners
  - Steering Shaft Splines & Joint(s)
  - Pitman Arm
  - Drag Link
  - Steering Arms
  - Tie Rod Arms
  - Tie Rod Ends
  - Radius Rods / Torque Arms
  - Spring Shackles & Hanger Brackets
  - King Pin Wear
  - Spring Leaves / Shocks / Air Bags
  - Front Hub Lubricant Level / Leaks

Cost: \$5,895.00 per unit, per year (does not include travel costs). ACCEPTED: \_\_\_\_\_

Please note: Our team will address any warranty issues on your behalf within the guidelines of your warranty terms. Additionally, any damaged and/or worn parts will be addressed and quoted for immediate repair. Approval will be needed to any additional repair work that is not part of this Service Agreement.

## *Environmental Equipment Experts*



Ingram Equipment Company, since 1979, is a family owned and operated company. We are your Environmental Equipment Experts!

**Our Core Values:** Teamwork, Integrity, Excellence, Proactive Hard Work, Service, Win/Win Transactions, Positive Attitude, Social Responsibility.

**80% of equipment failures can be prevented by better maintenance procedures.**

### **Service Agreement – Body Inspection for Rear Loaders – 90 Day Cycle**

#### **Each service:**

- ☐ Complete exterior inspection of body & internal weldments.
- ☐ Function test battery disconnect switch.
- ☐ Inspect battery box condition, mounting brackets, hold-downs, terminals, cables and fluid levels.
- ☐ Inspect condition of body props & alarms.
- ☐ Inspect all safety switches & adjust as needed.
- ☐ Inspect condition of handles, steps & ladders.
- ☐ Inspect & adjust control linkage as needed.
- ☐ Grease entire unit with special attention to weldments & tracks.
- ☐ Replace grease fittings as needed.
- ☐ Inspect for abnormal wear to pins, bushings & wear pads.
- ☐ Inspect cylinders for leaks & rod end damage.
- ☐ Inspect all steel lines & hoses for wear, leaks & to ensure proper routing and clamps.
- ☐ Inspect operation of all lights & electrical functions.
- ☐ Inspect wiring harness for damage.
- ☐ Inspect tailgate seal.
- ☐ Inspect reeving cylinder system (if applicable).
- ☐ Inspect the operation of tailgate locks.
- ☐ Inspect body mounts.
- ☐ Inspect the operation of all valves, blocks and tippers (if applicable).
- ☐ Check for proper detent, pressures and overall cycle times.
- ☐ Inspect operation of pump & PTO.
- ☐ Reset all pressures as needed.
- ☐ Check chassis coolant levels, inspect engine compartment and drivetrain for leaks.
- ☐ Inspect for correct operation of all chassis lights.
- ☐ Inspect condition of hydraulic fluid & sight glass.
- ☐ Every 90-days install new hydraulic filter. "OIL SAMPLE TAKEN".
- ☐ Every 6-months install new tailgate seal.
- ☐ Every 12-months install new hydraulic fluid, filters & sight glass.

## *Environmental Equipment Experts*

### **Service Agreement – Chassis Addendum – 90 day cycle – Scope of Work**

- ☐ Physical Damage, Sheet Metal, Frame & X-members
- ☐ Grill & Radiator, Wheels, Bumpers
- ☐ Air Leaks
- ☐ Headlights – High & Low Beams
- ☐ Road Lights
- ☐ Clearance Lights / Reflectors
- ☐ Turn Lights
- ☐ Brake Lights
- ☐ Emergency Flasher
- ☐ Backup / Load Lights
- ☐ License Plates, Permits & Mounting
- ☐ Mud Flaps / Serviceable
- ☐ Fuel Tank Mounting / Filler Cap in Place
- ☐ Fuel Crossover Line (Droop, Damage) If equipped
- ☐ Fuel Leaks
- ☐ Exhaust System-Condition, Leaks & Mounting Bolts

#### **INITIAL DRIVE IN:**

- ☐ Clutch Pedal Free Travel
- ☐ Glass for Cracks or Chips
- ☐ Interior Lights
- ☐ Cranking System Operation
- ☐ Gauges / Warning Lights – Illumination / Operational:
- ☐ Maintain Low Idle
- ☐ Oil Pressure
- ☐ Low Air Pressure Warning Devices
- ☐ Air Cleaner Restriction Gauge
- ☐ Electronic Warning Module / A&B Cluster Lights On/Off
- ☐ Windshield Wiper / Washer Condition & Operation
- ☐ Horns (Electric & Air)
- ☐ Mirrors / Heated / Motorized Operation
- ☐ Service Indicator Reset
- ☐ Drain Water from Air Tanks

#### **REAR FRAME:**

- ☐ 5th Wheel Mounting & Condition / Check Adjustment / Handle Locked
- ☐ Air Lines & Glad-hands
- ☐ Trailer Light Cord & Connectors
- ☐ Pintle – Hook / Eye Mounting & Condition
- ☐ Inner & Outer Hub Seals Leaks
- ☐ Spring Shackles & Hanger Brackets
- ☐ Spring Leaves / Bushings / Shocks / Air Bags
  
- ☐ Radius Rods / Torque Arms



## *Environmental Equipment Experts*



Ingram Equipment Company, since 1979, is a family owned and operated company. We are your Environmental Equipment Experts!

**Our Core Values:** Teamwork, Integrity, Excellence, Proactive Hard Work, Service, Win/Win Transactions, Positive Attitude, Social Responsibility.

**80% of equipment failures can be prevented by better maintenance procedures.**

### **Service Agreement – Body Inspection for Rear Loaders – 90 Day Cycle**

#### **Each service:**

- ☐ Complete exterior inspection of body & internal weldments.
- ☐ Function test battery disconnect switch.
- ☐ Inspect battery box condition, mounting brackets, hold-downs, terminals, cables and fluid levels.
- ☐ Inspect condition of body props & alarms.
- ☐ Inspect all safety switches & adjust as needed.
- ☐ Inspect condition of handles, steps & ladders.
- ☐ Inspect & adjust control linkage as needed.
- ☐ Grease entire unit with special attention to weldments & tracks.
- ☐ Replace grease fittings as needed.
- ☐ Inspect for abnormal wear to pins, bushings & wear pads.
- ☐ Inspect cylinders for leaks & rod end damage.
- ☐ Inspect all steel lines & hoses for wear, leaks & to ensure proper routing and clamps.
- ☐ Inspect operation of all lights & electrical functions.
- ☐ Inspect wiring harness for damage.
- ☐ Inspect tailgate seal.
- ☐ Inspect reeving cylinder system (if applicable).
- ☐ Inspect the operation of tailgate locks.
- ☐ Inspect body mounts.
- ☐ Inspect the operation of all valves, blocks andippers (if applicable).
- ☐ Check for proper detent, pressures and overall cycle times.
- ☐ Inspect operation of pump & PTO.
- ☐ Reset all pressures as needed.
- ☐ Check chassis coolant levels, inspect engine compartment and drivetrain for leaks.
- ☐ Inspect for correct operation of all chassis lights.
- ☐ Inspect condition of hydraulic fluid & sight glass.
- ☐ Every 90-days install new hydraulic filter. "OIL SAMPLE TAKEN".
- ☐ Every 6-months install new tailgate seal.
- ☐ Every 12-months install new hydraulic fluid, filters & sight glass.

Cost: \$3,495.00 per unit, per year (does not include travel costs). ACCEPTED: \_\_\_\_\_

Please note: Our team will address any warranty issues on your behalf within the guidelines of your warranty terms. Additionally, any damaged and/or worn parts will be addressed and quoted for immediate repair. Approval will be needed to any additional repair work that is not part of this Service Agreement.

Prepared for:  
JOHNNY WOLF  
STOCK MADISON AL  
15151 AL HWY 20 SW  
MADISON, AL 35756  
Phone: 256-350-1630

Prepared by:  
Johnny Wolf  
NEELY COBLE COMPANY, INC.  
Phone: 256-350-1630  
E-Mail:  
johnnyw@neelycoble.com

Dimensions	Inches
Bumper to Back of Cab (BB)	110.7
Bumper to Centerline of Front Axle (BA)	47.4
Min. Cab Body Clearance (CB)	3.0
Back of Cab to Centerline of Rear Axle (GA)	188.7
Effective Back of Cab to Centerline of Rear Axle (Effective CA)	185.7
Back of Cab Protrusions (Exhaust/Intake) (CP)	3.0
Back of Cab Protrusions (Side Benders/Turn Van) (CP)	0.0
Back of Cab Protrusions (CNC Tank)	0.0
Back of Cab Clearance (GL)	3.0
Back of Cab to End of Frame	258.6
Cab Height (CH)	73.4
Wheelbase (WB)	252.0
Frame Overhang (OH)	69.9
Overall Length (OL)	369.3
Rear Axle Spacing	56.0
Unladen Frame Height at Centerline of Rear Axle	43.9

Performance calculations are estimates only. If performance calculations are critical, please contact Customer Application Engineering.

**Prepared for:**  
JOHNNY WOLF  
STOCK MADISON AL  
15151 AL HWY 20 SW  
MADISON, AL 35756  
Phone: 256-350-1630

**Prepared by:**  
Johnny Wolf  
NEELY COBLE COMPANY, INC.  
Phone: 256-350-1630  
E-Mail:  
johnnyw@neelycoble.com

---

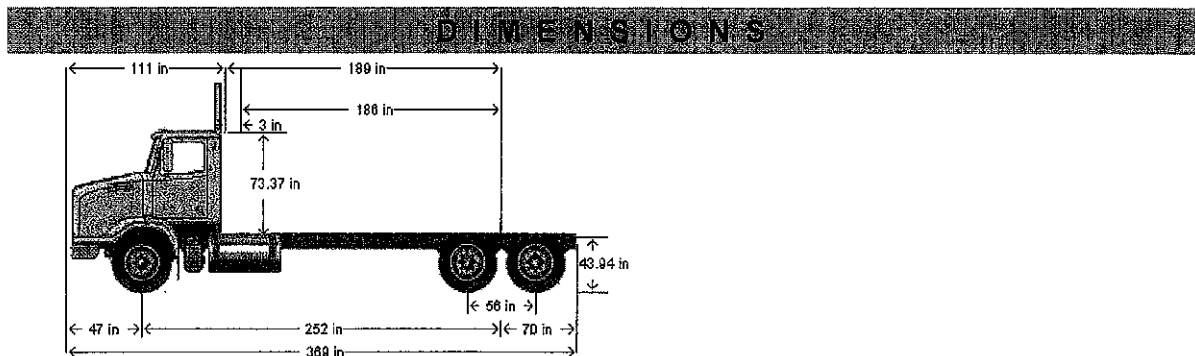
Total Weight <sup>+</sup>	10956 lbs	8406 lbs	19362 lbs
---------------------------	-----------	----------	-----------

(+) Weights shown are estimates only.

If weight is critical, contact Customer Application Engineering.

Prepared for:  
JOHNNY WOLF  
STOCK MADISON AL  
15151 AL HWY 20 SW  
MADISON, AL 35756  
Phone: 256-350-1630

Prepared by:  
Johnny Wolf  
NEELY COBLE COMPANY, INC.  
Phone: 256-350-1630  
E-Mail:  
johnnyw@neelycoble.com



#### VEHICLE SPECIFICATIONS SUMMARY - DIMENSIONS

Model .....	4700SB
Wheelbase (545) .....	6400MM (252 INCH) WHEELBASE
Rear Frame Overhang (552) .....	1775MM (70 INCH) REAR FRAME OVERHANG
Fifth Wheel (578) .....	NO FIFTH WHEEL
Mounting Location (577) .....	NO FIFTH WHEEL LOCATION
Maximum Forward Position (in) .....	0
Maximum Rearward Position (in) .....	0
Amount of Slide Travel (in) .....	0
Slide Increment (in) .....	0
Desired Slide Position (in) .....	0.0
Cab Size (829) .....	110 INCH BBC STEEL CONVENTIONAL CAB
Sleeper (682) .....	NO SLEEPER BOX/SLEEPER CAB
Exhaust System (016) .....	RH OUTBOARD UNDER STEP MOUNTED HORIZONTAL AFTERTREATMENT SYSTEM ASSEMBLY WITH RH B-PILLAR MOUNTED VERTICAL TAILPIPE

#### TABLE SUMMARY - DIMENSIONS

Prepared for:  
JOHNNY WOLF  
STOCK MADISON AL  
15151 AL HWY 20 SW  
MADISON, AL 35756  
Phone: 256-350-1630

Prepared by:  
Johnny Wolf  
NEELY COBLE COMPANY, INC.  
Phone: 256-350-1630  
E-Mail:  
johnnyw@neelycoble.com

Description	Weight Front	Weight Rear
(1) DASH MOUNTED PTO SWITCH WITH INDICATOR LAMP	5	
ELECTRIC ENGINE OIL PRESSURE GAUGE		
AM/FM/WB WORLD TUNER RADIO WITH CD PLAYER, BLUETOOTH, IPOD INTERFACE, USB AND AUXILIARY INPUTS, J1939	10	
ROOF/OVERHEAD CONSOLE MOUNTED RADIO		
(4) RADIO SPEAKERS IN CAB		
POWER AND GROUND WIRING FOR CB RADIO IN OVERHEAD CONSOLE		
MULTI-BAND AM/FM/WB/CB DUAL MIRROR MOUNTED ANTENNA SYSTEM	4	
ELECTRONIC MPH SPEEDOMETER WITH SECONDARY KPH SCALE, WITH ODOMETER		
STANDARD VEHICLE SPEED SENSOR		
ELECTRONIC 3000 RPM TACHOMETER		
VT-HU CONNECTIVITY PLATFORM HARDWARE		
2 YEARS DETROIT CONNECT BASE PACKAGE (VIRTUAL TECHNICIAN, DETROIT CONNECT PORTAL ACCESS) FOR VT-HU CONNECTIVITY PLATFORM		
IGNITION SWITCH CONTROLLED ENGINE STOP		
NO HARDWIRE SWITCH #1		
NO HARDWIRE SWITCH #2		
NO HARDWIRE SWITCH #3		
NO HARDWIRE SWITCH #4		
NO HARDWIRE SWITCH #5, ON/OFF LATCHING, WIRED TO CUSTOMER INTERFACE CONNECTOR		
NO HARDWIRE SWITCH #6, ON/OFF LATCHING, WIRED TO CUSTOMER INTERFACE CONNECTOR		
NO HARDWIRE SWITCH #7, ON/OFF LATCHING, WIRED TO CUSTOMER INTERFACE CONNECTOR		
NO HARDWIRE SWITCH #8, ON/OFF LATCHING, WIRED TO CUSTOMER INTERFACE CONNECTOR		
NO HARDWIRE SWITCH #9, ON/OFF LATCHING, WIRED TO CUSTOMER INTERFACE CONNECTOR		
NO HARDWIRE SWITCH #10, ON/OFF LATCHING, WIRED TO CUSTOMER INTERFACE CONNECTOR		

Prepared for:  
JOHNNY WOLF  
STOCK MADISON AL  
15151 AL HWY 20 SW  
MADISON, AL 35756  
Phone: 256-350-1630

Prepared by:  
Johnny Wolf  
NEELY COBLE COMPANY, INC.  
Phone: 256-350-1630  
E-Mail:  
johnnyw@neelycoble.com

Description	Weight Front	Weight Rear
REAR SPRING LOADED HAND CONTROL BRAKE VALVE	2	
2 INCH VOLTMETER		
SINGLE ELECTRIC WINDSHIELD WIPER MOTOR WITH DELAY		
CAB/TRAILER MARKER LIGHT SWITCH WITH SEPARATE HEADLIGHT SWITCH		
ONE VALVE PARKING BRAKE SYSTEM WITH WARNING INDICATOR		
VSM NON CANCELING TURN SIGNAL SWITCH WITH INTEGRAL HEADLAMP DIMMER WITHOUT BRAKE OVERRIDE		
PACIFIC INSIGHT ELECTRONIC FLASHER		

#### Design

PAINT: ONE SOLID COLOR

#### Color

CAB COLOR A: L0006EB WHITE ELITE BC  
CAB INTERIOR PAINTED SAME AS CAB COLOR  
BLACK, HIGH SOLIDS POLYURETHANE CHASSIS PAINT  
POWDER WHITE (N0006EA) REAR  
WHEELS/RIMS (PKWHT21, TKWHT21, W, TW)

#### Certification / Compliance

U.S. FMVSS CERTIFICATION, EXCEPT SALES  
CABS AND GLIDER KITS

#### Raw Performance Data

CALC'D FRAME LENGTH - OVERALL : 352.02  
CALCULATED EFFECTIVE BACK OF CAB TO  
REAR SUSPENSION C/L (CA) : 185.69 in  
CALC'D SPACE AVAILABLE FOR DECKPLATE :  
188.69 in

#### TOTAL VEHICLE SUMMARY

#### Weight Summary

	Weight Front	Weight Rear	Total Weight
Factory Weight <sup>+</sup>	10956 lbs	8406 lbs	19362 lbs

Application Version 10.1.202  
Data Version PRL-18T.003  
2020 4700SB DD13 470HP 4500RDS  
20FR 46RR...



05/24/2019 11:38 AM

Page 16 of 19

Prepared for:  
JOHNNY WOLF  
STOCK MADISON AL  
15151 AL HWY 20 SW  
MADISON, AL 35756  
Phone: 256-350-1630

Prepared by:  
Johnny Wolf  
NEELY COBLE COMPANY, INC.  
Phone: 256-350-1630  
E-Mail:  
johnnyw@neelycoble.com

Description	Weight Front	Weight Rear
HVAC DUCTING WITH FOAM MAIN FRESH AIR FILTER AND OUTSIDE PRE-FILTER		
MAIN HVAC CONTROLS WITH RECIRCULATION SWITCH		
STANDARD HEATER PLUMBING WITH BALL SHUTOFF VALVES AT SUPPLY LINES ONLY		
VALEO HEAVY DUTY A/C REFRIGERANT COMPRESSOR		
RADIATOR MOUNTED AIR CONDITIONER CONDENSER		
BINARY CONTROL, R-134A		
CAB INSULATION		
AUTOMATIC SELF-RESET CIRCUIT BREAKER IN MAIN DASH POWER DISTRIBUTION BOX AND CIRCUIT BREAKER/FUSE IN AUXILIARY POWER DISTRIBUTION BOXES		
DOOR ACTIVATED DOME LIGHT, UNDER DASH LIGHT AND LH AND RH DOOR MOUNTED COURTESY LIGHTS		
CAB DOOR LATCHES WITH MANUAL DOOR LOCKS		
(2) 12 VOLT POWER RECEPTACLES PLATE MOUNTED IN DASH		
TRIANGULAR REFLECTORS KIT WITHOUT FLARES SHIPPED LOOSE IN CAB	10	
ELITE HIGH BACK AIR SUSPENSION DRIVER SEAT WITH HEAT, 3 CHAMBER AIR LUMBAR, INTEGRATED CUSHION EXTENSION, FORWARD AND REAR CUSHION TILT AND ADJUSTABLE SHOCK	20	
BATTERY BOX MID BACK NON SUSPENSION PASSENGER SEAT		
BLACK SUSPENSION COVER FOR AIR DRIVER SEAT	2	
DUAL DRIVER SEAT ARMRESTS, NO PASSENGER SEAT ARMRESTS	4	
BLACK CORDURA PLUS CLOTH DRIVER SEAT COVER		
BLACK CORDURA PLUS CLOTH PASSENGER SEAT COVER		
3 POINT DRIVER AND PASSENGER SEAT BELT RETRACTORS		
ADJUSTABLE TILT AND TELESCOPING STEERING COLUMN		

Prepared for:  
JOHNNY WOLF  
STOCK MADISON AL  
15151 AL HWY 20 SW  
MADISON, AL 35756  
Phone: 256-350-1630

Prepared by:  
Johnny Wolf  
NEELY COBLE COMPANY, INC.  
Phone: 256-350-1630  
E-Mail:  
johnnyw@neelycoble.com

Description	Weight Front	Weight Rear
2-SPOKE 20 INCH (500MM) BLACK LEATHER WRAPPED STEERING WHEEL		
DRIVER AND PASSENGER INTERIOR SUN VISORS		
<b>Instruments &amp; Controls</b>		
NON-ADJUSTABLE SUSPENDED PEDALS		
ELECTRONIC FOOT ACCELERATOR		
STAR GAUGES WITH BRIGHT BEZELS		
FIGURED CHERRY WOODGRAIN ULTRA GLOSS FINISH DRIVER INSTRUMENT PANEL		
FIGURED CHERRY WOODGRAIN ULTRA GLOSS FINISH CENTER INSTRUMENT PANEL		
LOW AIR PRESSURE INDICATOR LIGHT AND AUDIBLE ALARM		
2 INCH PRIMARY AND SECONDARY AIR PRESSURE GAUGES		
INTAKE MOUNTED AIR RESTRICTION INDICATOR WITH GRADUATIONS		
CRUISE CONTROL SWITCHES IN THE CENTER PANEL		
KEY OPERATED IGNITION SWITCH AND INTEGRAL START POSITION; 4 POSITION OFF/RUN/START/ACCESSORY		
WARNING LAMP/LIGHT BAR DISPLAY, NON-DATA LINKED		
HEAVY DUTY ONBOARD DIAGNOSTICS INTERFACE CONNECTOR LOCATED BELOW LH DASH AND BODY BUILDER INTERFACE CONNECTOR LOCATED BETWEEN DRIVER AND PASSENGER SEATS		
2 INCH ELECTRIC FUEL GAUGE		
EMISSIONS LIMITED IDLE ADJUST		
NO ADDITIONAL EXTRA SWITCH ACCUATORS		
NO CUSTOMER INTERFACE CONNECTOR		
NO PREWIRED HIGH POWER CIRCUIT		
DUAL REAR AXLE TEMPERATURE GAUGES WITH SENSOR SHIELD		
ELECTRICAL ENGINE COOLANT TEMPERATURE GAUGE		
ENGINE OIL TEMPERATURE GAUGE		
2 INCH TRANSMISSION OIL TEMPERATURE GAUGE		



Prepared for:  
JOHNNY WOLF  
STOCK MADISON AL  
15151 AL HWY 20 SW  
MADISON, AL 35756  
Phone: 256-350-1630

Prepared by:  
Johnny Wolf  
NEELY COBLE COMPANY, INC.  
Phone: 256-350-1630  
E-Mail:  
johnnyw@neelycoble.com

Description	Weight Front	Weight Rear
ALCOA LVL ONE 82462X 22.5X12.25 10-HUB PILOT 4.68 INSET 10-HAND ALUMINUM DISC FRONT WHEELS	-8	
ACCURIDE 28828 22.5X8.25 10-HUB PILOT 2- HAND HD STEEL DISC REAR WHEELS		104
FRONT WHEEL MOUNTING NUTS		
REAR WHEEL MOUNTING NUTS		
<b>110 INCH BBC STEEL CONVENTIONAL CAB</b>		
WESTERN STAR STAINLESS STEEL CAB SKIRT		
AIR CAB MOUNTS WITH CHECK VALVE		
NONREMOVABLE BUGSCREEN MOUNTED BEHIND GRILLE		
FRONT FENDERS		
2 INCH FENDER EXTENSIONS	5	
LH AND RH EXTERIOR GRAB HANDLES WITH RUBBER INSERT AND LH AND RH INTERIOR GRAB HANDLES MOUNTED TO A POST		
STATIONARY BRIGHT FINISH GRILLE		
CHROME HOOD MOUNTED AIR INTAKE GRILLE		
GALVANEALD STEEL SEVERE SERVICE CAB		
FIBERGLASS HOOD		
DUAL HADLEY SD-978 26 INCH RECTANGULAR AIR HORNS		
SINGLE ELECTRIC HORN		
DUAL HORN SHIELDS		
DOORS AND IGNITION KEYED THE SAME (3 KEYS)		
REAR LICENSE PLATE MOUNT END OF FRAME		
SINGLE RECTANGULAR H4 HALOGEN HEADLIGHTS WITH BRIGHT BEZELS		
LED MARKER LAMPS		
DAYTIME RUNNING LIGHTS		
INTEGRAL LED STOP/TAIL/BACKUP LIGHTS		
STANDARD FRONT TURN SIGNAL LAMPS		
(2) FLUSH LED UTILITY LIGHTS MOUNTED BACK OF CAB/SLEEPER	6	
DUAL WEST COAST STAINLESS STEEL HEATED MIRRORS WITH LH AND RH REMOTE		
DOOR MOUNTED MIRRORS		
102 INCH EQUIPMENT WIDTH		

Prepared for:  
JOHNNY WOLF  
STOCK MADISON AL  
15151 AL HWY 20 SW  
MADISON, AL 35756  
Phone: 256-350-1630

Prepared by:  
Johnny Wolf  
NEELY COBLE COMPANY, INC.  
Phone: 256-350-1630  
E-Mail:  
johnnyw@neelycoble.com

Description	Weight Front	Weight Rear
LH AND RH 8 INCH STAINLESS STEEL CONVEX MIRRORS MOUNTED BELOW PRIMARY MIRRORS		
RH DOWN VIEW MIRROR		
STANDARD SIDE/REAR REFLECTORS		
RH AFTERTREATMENT SYSTEM CAB ACCESS WITH PLAIN DIAMOND PLATE COVER		
STAINLESS STEEL EXTERIOR SUN VISOR	28	
17.5X35 INCH TINTED REAR WINDOW		
TINTED DOOR GLASS		
RH AND LH ELECTRIC POWERED WINDOWS	4	
2-PIECE TINTED CURVED GASKET MOUNTED WINDSHIELD		
2 GALLON WINDSHIELD WASHER RESERVOIR WITHOUT FLUID LEVEL INDICATOR, MOUNTED UNDER CAB, WITH REMOTE FILL		
<b>Cab Interior</b>		
SMOKY MOUNTAIN GRAY VINYL PREMIUM INTERIOR		
BLACK HARD TRIM		
PREMIUM LEFT HAND DOOR TRIM WITH CHERRY ACCENT		
PREMIUM RIGHT HAND DOOR TRIM WITH CHERRY ACCENT		
BLACK MATS WITH DOUBLE INSULATION		
ASH CUP AND LIGHTER		
FORWARD ROOF MOUNTED CONSOLE		
PASSENGER SIDE WING DASH MOUNTED GLOVE BOX WITH LOCKING DOOR		
LH AND RH DOOR MAP POCKETS		
(2) COAT HOOKS ON BACKWALL OF CAB		
(1) DOUBLE CUP HOLDER WITH CELL PHONE HOLDER LH OR RH DASH		
TWO-TONE CHARCOAL UPPER/COOL GRAY LOWER SOFT TOUCH WING DASH WITH BLACK DRIVER SIDE COSMETIC UNDER DASH COVER		
STANDARD WIRING		
5 LB. FIRE EXTINGUISHER	10	
HEATER, DEFROSTER AND AIR CONDITIONER WITH CONSTANT TEMPERATURE CONTROL AND COSMETIC COVER		

Prepared for:  
JOHNNY WOLF  
STOCK MADISON AL  
15151 AL HWY 20 SW  
MADISON, AL 35756  
Phone: 256-350-1630

Prepared by:  
Johnny Wolf  
NEELY COBLE COMPANY, INC.  
Phone: 256-350-1630  
E-Mail:  
johnnyw@neelycoble.com

Description	Weight Front	Weight Rear
WABCO OIL COALESCING FILTER FOR AIR DRYER		
AIR DRYER FRAME MOUNTED		
STEEL AIR BRAKE RESERVOIRS MOUNTED INSIDE RAIL		
CLEAR FRAME RAILS 36 INCHES FROM BACK OF CAB OUTBOARD OF BOTH FRAME RAILS		
PULL CABLES ON ALL AIR RESERVOIR(S)		
Halter for Trailer		
NO TRAILER RECEPTACLE BRACKET		
W/Coil Spring Frame		
6400MM (252 INCH) WHEELBASE		
7/16X3-9/16X11-1/8 INCH STEEL FRAME (11.11MMX282.6MM/0.437X11.13 INCH) 120KSI	730	40
1/4 INCH (6.35MM) C-CHANNEL INNER FRAME REINFORCEMENT	254	442
1775MM (70 INCH) REAR FRAME OVERHANG		
FRAME OVERHANG RANGE: 61 INCH TO 70 INCH		
CALC'D BACK OF CAB TO REAR SUSP C/L (CA) : 188.69 in		
CALCULATED EFFECTIVE BACK OF CAB TO REAR SUSPENSION C/L (CA) : 185.69 in		
CALC'D FRAME LENGTH - OVERALL : 352.02		
FRAME HEIGHT TOP FRONT UNLADEN : 42.22 in		
FRAME HEIGHT TOP FRONT LADEN : 39.19 in		
FRAME HEIGHT TOP REAR UNLADEN : 43.94 in		
FRAME HEIGHT TOP REAR LADEN : 39.19 in		
CALCULATED FRAME SPACE LH SIDE : 98.04 in		
CALCULATED FRAME SPACE RH SIDE : 240.46 in		
CALC'D SPACE AVAILABLE FOR DECKPLATE : 188.69 in		
SQUARE END OF FRAME		
STANDARD WEIGHT ENGINE CROSSMEMBER		
STANDARD CROSSMEMBER BACK OF TRANSMISSION		
STANDARD MIDSHIP #1 CROSSMEMBER(S)		
STANDARD REARMOST CROSSMEMBER		
HEAVY DUTY SUSPENSION CROSSMEMBER		

Prepared for:  
JOHNNY WOLF  
STOCK MADISON AL  
15151 AL HWY 20 SW  
MADISON, AL 35756  
Phone: 256-350-1630

Prepared by:  
Johnny Wolf  
NEELY COBLE COMPANY, INC.  
Phone: 256-350-1630  
E-Mail:  
johnnyw@neelycoble.com

	Description	Weight Front	Weight Rear
	STANDARD WEIGHT REAR SUSPENSION CROSSMEMBER		
<b>Chassis Equipment</b>			
	14 INCH CHROMED STEEL BUMPER		
	REMOVABLE FRONT TOW HOOKS STORED ON THE CHASSIS FRAME	25	
	BUMPER MOUNTING FOR SINGLE LICENSE PLATE		
	FRONT ANTI-SPRAY CAB MOUNTED MUDFLAPS		
	GRADE 8 THREADED HEX HEADED FRAME FASTENERS		
	EXTERIOR HARNESSES WRAPPED IN ABRASION TAPE		
<b>Fuel Tanks</b>			
	80 GALLON/302 LITER ALUMINUM FUEL TANK - LH	10	
	25 INCH DIAMETER FUEL TANK(S)		
	PLAIN ALUMINUM/PAINTED STEEL FUEL/HYDRAULIC TANK(S) WITH PAINTED BANDS		
	FUEL TANK(S) FORWARD		
	PLAIN STEP FINISH		
	FUEL TANK CAP(S)		
	DAVCO 487 FUEL/WATER SEPARATOR WITH ESOC AND 12 VOLT PREHEATER	15	
	EQUIFLO INBOARD FUEL SYSTEM		
	HIGH TEMPERATURE REINFORCED NYLON FUEL LINE		
	NO FUEL COOLER	-10	
<b>Tires</b>			
	MICHELIN XZY-3 385/65R22.5 18 PLY RADIAL FRONT TIRES	130	
	MICHELIN X MULTI D 11R22.5 16 PLY RADIAL REAR TIRES (NORTH AMERICAN ONLY)		120
<b>Hubs</b>			
	CONMET PRESET PLUS PREMIUM IRON FRONT HUBS		
	CONMET PRESET PLUS PREMIUM IRON REAR HUBS		
<b>Wheels</b>			

Prepared for:  
JOHNNY WOLF  
STOCK MADISON AL  
15151 AL HWY 20 SW  
MADISON, AL 35756  
Phone: 256-350-1630

Prepared by:  
Johnny Wolf  
NEELY COBLE COMPANY, INC.  
Phone: 256-350-1630  
E-Mail:  
johnnyw@neelycoble.com

Description	Weight Front	Weight Rear
DETROIT DA-F-20.0-5 20,000# FL1 71.0 KPI/3.74 DROP SINGLE FRONT AXLE		
MERITOR 16.5X6 Q+ CAST SPIDER CAM FRONT BRAKES, DOUBLE ANCHOR, FABRICATED SHOES		
NON-ASBESTOS FRONT BRAKE LINING		
CONMET CAST IRON FRONT BRAKE DRUMS		
FRONT BRAKE DUST SHIELDS	5	
FRONT OIL SEALS		
VENTED FRONT HUB CAPS WITH WINDOW, CENTER AND SIDE PLUGS - OIL		
STANDARD SPINDLE NUTS FOR ALL AXLES		
MERITOR AUTOMATIC FRONT SLACK ADJUSTERS		
STANDARD KING PIN BUSHINGS		
TRW THP-60 POWER STEERING WITH RCH45 AUXILIARY GEAR	90	
POWER STEERING PUMP		
4 QUART POWER STEERING RESERVOIR		
OIL/AIR POWER STEERING COOLER		
STANDARD CUPS AND CONES (WHEEL BEARINGS) FRONT AND REAR		
SYNTHETIC 75W-90 FRONT AXLE LUBE		
20,000# FLAT LEAF FRONT SUSPENSION	50	
GRAPHITE BRONZE BUSHINGS WITH SEALS - FRONT SUSPENSION		
FRONT SHOCK ABSORBERS		
RT-46-160P 46,000# R-SERIES TANDEM REAR AXLE		450
4.56 REAR AXLE RATIO		
IRON REAR AXLE CARRIER WITH STANDARD AXLE HOUSING		
MXL 18T MERITOR EXTENDED LUBE MAIN DRIVELINE WITH HALF ROUND YOKES	80	80
MXL 17T MERITOR EXTENDED LUBE INTERAXLE DRIVELINE WITH HALF ROUND YOKES		
DRIVER CONTROLLED TRACTION DIFFERENTIAL - BOTH TANDEM REAR AXLES		30

Prepared for:  
JOHNNY WOLF  
STOCK MADISON AL  
15151 AL HWY 20 SW  
MADISON, AL 35756  
Phone: 256-350-1630

Prepared by:  
Johnny Wolf  
NEELY COBLE COMPANY, INC.  
Phone: 256-350-1630  
E-Mail:  
johnnyw@neelycoble.com

Description	Weight Front	Weight Rear
(1) INTERAXLE LOCK VALVE, (1) DRIVER CONTROLLED DIFFERENTIAL LOCK FORWARD- REAR AXLE VALVE AND (1) REAR-REAR AXLE VALVE		
INDICATOR LIGHT AND BUZZER FOR EACH INTERAXLE LOCKOUT SWITCH		
INDICATOR LIGHT AND BUZZER FOR EACH DRIVER CONTROLLED TRACTION DEVICE SWITCH		
MERITOR 16.5X8.62 Q+ CAST SPIDER CAM REAR BRAKES, DOUBLE ANCHOR, FABRICATED SHOES		
NON-ASBESTOS REAR BRAKE LINING		
BRAKE CAMS AND CHAMBERS ON FORWARD SIDE OF DRIVE AXLE(S)		
CONMET CAST IRON REAR BRAKE DRUMS		
REAR BRAKE DUST SHIELDS		10
REAR OIL SEALS		
WABCO TRISTOP D LONGSTROKE 2-DRIVE AXLE SPRING PARKING CHAMBERS		
HALDEX AUTOMATIC REAR SLACK ADJUSTERS		
SYNTHETIC 75W-90 REAR AXLE LUBE		
<b>Rear Suspension</b>		
TUFTRAC 46,000# REAR SPRING SUSPENSION		490
TUFTRAC STANDARD RIDE HEIGHT		
AXLE CLAMPING GROUP		
56 INCH AXLE SPACING		
FORE/AFT AND TRANSVERSE CONTROL RODS		
REAR SHOCK ABSORBERS - TWO AXLES (TANDEM)		40
<b>Brake System</b>		
WABCO 4S/4M ABS WITH TRACTION CONTROL, WITH ATC OFF-ROAD SWITCH		
REINFORCED NYLON, FABRIC BRAID AND WIRE BRAID CHASSIS AIR LINES		
FIBER BRAID PARKING BRAKE HOSE		
STANDARD BRAKE SYSTEM VALVES		
RELAY VALVE WITH 5-8 PSI CRACK PRESSURE, NO REAR PROPORTIONING VALVE		
WABCO SYSTEM SAVER HP WITH INTEGRAL AIR GOVERNOR AND HEATER		

Prepared for:  
JOHNNY WOLF  
STOCK MADISON AL  
15151 AL HWY 20 SW  
MADISON, AL 35756  
Phone: 256-350-1630

Prepared by:  
Johnny Wolf  
NEELY COBLE COMPANY, INC.  
Phone: 256-350-1630  
E-Mail:  
johnnyw@neelycoble.com

Description	Weight Front	Weight Rear
LH MEDIUM DUTY STANDARD DIESEL EXHAUST FLUID TANK LOCATION		
STAINLESS STEEL AFTERTREATMENT DEVICE/MUFFLER/TAILOPIPE SHIELD		
BORG WARNER (KYSOR) REAR AIR ON/OFF ENGINE FAN CLUTCH		
AUTOMATIC FAN CONTROL WITH DASH SWITCH AND INDICATOR LIGHT, NON ENGINE MOUNTED		
DDC SUPPLIED ENGINE MOUNTED FUEL FILTER/FUEL WATER SEPARATOR WITH WATER-IN-FUEL INDICATOR		
FULL FLOW OIL FILTER		
1500 SQUARE INCH ALUMINUM RADIATOR		
MOUNTING FOR FIREWALL MOUNTED SURGE TANK		
ANTIFREEZE TO -34F, OAT (NITRITE AND SILICATE FREE) EXTENDED LIFE COOLANT		
GATES BLUE STRIPE COOLANT HOSES OR EQUIVALENT		
CONSTANT TENSION HOSE CLAMPS FOR COOLANT HOSES		
HDEP FIXED RATIO COOLANT PUMP AND RADIATOR DRAIN VALVE		
LOWER RADIATOR GUARD		
PHILLIPS-TEMRO 1500 WATT/115 VOLT BLOCK HEATER		
PHILLIPS-TEMRO 300 WATT/115 VOLT OIL PREHEATER		
CHROME ENGINE HEATER RECEPTACLE MOUNTED UNDER LH DOOR		
ALUMINUM FLYWHEEL HOUSING		
DELCO 12V MOD 3.175-39MT+ OCP STARTER WITH THERMAL PROTECTION AND INTEGRATED MAGNETIC SWITCH		
ALLISON 4500 RDS AUTOMATIC TRANSMISSION WITH PTO PROVISION	170	50
ALLISON VOCATIONAL PACKAGE 142 - AVAILABLE ON 3000/4000 PRODUCT FAMILIES WITH VOCATIONAL MODEL RDS		

Prepared for:  
JOHNNY WOLF  
STOCK MADISON AL  
15151 AL HWY 20 SW  
MADISON, AL 35756  
Phone: 256-350-1630

Prepared by:  
Johnny Wolf  
NEELY COBLE COMPANY, INC.  
Phone: 256-350-1630  
E-Mail:  
johnnyw@neelycoble.com

Description	Weight Front	Weight Rear
ALLISON VOCATIONAL RATING FOR REFUSE APPLICATIONS AVAILABLE WITH ALL PRODUCT FAMILIES		
PRIMARY MODE GEARS, LOWEST GEAR 1, START GEAR 1, HIGHEST GEAR 6, AVAILABLE FOR 3000/4000 PRODUCT FAMILIES ONLY		
SECONDARY MODE GEARS, LOWEST GEAR 1, START GEAR 1, HIGHEST GEAR 6, AVAILABLE FOR 3000/4000 PRODUCT FAMILIES ONLY		
PRIMARY SHIFT SCHEDULE RECOMMENDED BY DTNA AND ALLISON, THIS DEFINED BY ENGINE AND VOCATIONAL USAGE		
SECONDARY SHIFT SCHEDULE RECOMMENDED BY DTNA AND ALLISON, THIS DEFINED BY ENGINE AND VOCATIONAL USAGE		
PRIMARY SHIFT SPEED RECOMMENDED BY DTNA AND ALLISON, THIS DEFINED BY ENGINE AND VOCATIONAL USAGE		
1800 RPM SECONDARY MODE SHIFT SPEED		
FUEL SENSE 2.0 DISABLED - PERFORMANCE - TABLE BASED		
NO REAR PTO TRANSMISSION RANGE		
BODY LIGHTING INTERFACE BLUNT CUT WIRING WITH FUSE PANEL WIRE MOUNTED BETWEEN DRIVER AND PASSENGER SEATS		
ELECTRONIC TRANSMISSION CUSTOMER ACCESS CONNECTOR, BLUNT CUT, MOUNTED BETWEEN DRIVER AND PASSENGER SEATS		
CUSTOMER INSTALLED CHELSEA 277 SERIES PTO		
PTO MOUNTING, LH SIDE OF MAIN TRANSMISSION		
MAGNETIC PLUGS, ENGINE DRAIN, TRANSMISSION DRAIN, AXLE(S) FILL AND DRAIN		
PUSH BUTTON ELECTRONIC SHIFT CONTROL, DASH MOUNTED		
TRANSMISSION PROGNOSTICS - ENABLED 2013		
WATER TO OIL TRANSMISSION COOLER, FRAME MOUNTED	15	
TRANSMISSION OIL CHECK AND FILL WITH ELECTRONIC OIL LEVEL CHECK		
SYNTHETIC TRANSMISSION FLUID (TES-295 COMPLIANT)		

#### Front Axle and Equipment

Application Version 10.1.202  
Data Version PRL-18T.003  
2020 4700SB DD13 470HP 4500RDS  
20FR 46RR...



05/24/2019 11:38 AM

Page 6 of 19



Prepared for:  
JOHNNY WOLF  
STOCK MADISON AL  
15151 AL HWY 20 SW  
MADISON, AL 35756  
Phone: 256-350-1630

Prepared by:  
Johnny Wolf  
NEELY COBLE COMPANY, INC.  
Phone: 256-350-1630  
E-Mail:  
johnnyw@neelycoble.com

Description	Weight Front	Weight Rear
ROLL OFF/ROLL ON BODY EXPECTED TRUCK BODY LENGTH : 0.0 ft		
DETROIT DD13 12.8L 450 HP @ 1625 RPM, 1900 GOV RPM, 1650 LB/FT @ 975 RPM		
70 MPH ROAD SPEED LIMIT CRUISE CONTROL SPEED LIMIT SAME AS ROAD SPEED LIMIT PTO MODE ENGINE RPM LIMIT - 900 RPM PTO MODE BRAKE OVERRIDE - SERVICE BRAKE APPLIED OR PARK BRAKE NOT APPLIED PTO RPM WITH CRUISE SET SWITCH - 600 RPM PTO RPM WITH CRUISE RESUME SWITCH - 600 RPM PTO MODE CANCEL VEHICLE SPEED - 5 MPH PTO MODE RPM INCREMENT - 25 RPM PTO GOVERNOR RAMP RATE - 250 RPM PER SECOND ONE REMOTE PTO SPEED PTO SPEED 1 SETTING - 900 RPM SOFT CRUISE CONTROL ENABLED PTO MINIMUM RPM - 600		
2016-2019 ONBOARD DIAGNOSTICS/2010 EPA/CARB/FINAL GHG17 CONFIGURATION VEHICLE IS SUBJECT TO EPA GHG14/GHG17, D OES NOT HAVE REGULATORY VEHICLE SPEED LIMITER (VSL) OR AUTOMATIC ENGINE SHUTDOWN(AES) 2008 CARB EMISSION CERTIFICATION - CLEAN IDLE (INCLUDES 6X4 INCH LABEL ON LOWER FORWARD CORNER OF DRIVER DOOR) STANDARD OIL PAN ENGINE MOUNTED OIL CHECK AND FILL ONE PIECE VALVE COVER SIDE OF HOOD AIR INTAKE WITH NFPA COMPLIANT EMBER SCREEN AND FIRE RETARDANT DONALDSON AIR CLEANER		



Prepared for:  
JOHNNY WOLF  
STOCK MADISON AL  
15151 AL HWY 20 SW  
MADISON, AL 35756  
Phone: 256-350-1630

Prepared by:  
Johnny Wolf  
NEELY COBLE COMPANY, INC.  
Phone: 256-350-1630  
E-Mail:  
johnnyw@neelycoble.com

Description	Weight Front	Weight Rear
DR 12V 160 AMP 36-SI BRUSHLESS QUADRAMOUNT PAD ALTERNATOR WITH REMOTE BATTERY VOLT SENSE	10	
(3) DTNA GENUINE, AGM STARTING AND CYCLING, MIN 2190CCA, 570RC, THREADED STUD BATTERIES		
PASSENGER SEAT BATTERY BOX VENTED TO OUTSIDE OF CAB		
BATTERY BOX MOUNTED UNDER PASSENGER SEAT		
WIRE GROUND RETURN FOR BATTERY CABLES WITH ADDITIONAL FRAME GROUND RETURN		
PLASTIC BATTERY BOX COVER		
POSITIVE LOAD DISCONNECT WITH CAB MOUNTED CONTROL SWITCH MOUNTED OUTBOARD DRIVER SEAT	8	
POSITIVE AND NEGATIVE POSTS FOR JUMPSTART LOCATED ON FRAME NEXT TO STARTER	2	
BW MODEL BA-921 19.0 CFM SINGLE CYLINDER AIR COMPRESSOR WITH SAFETY VALVE		
AIR COMPRESSOR DISCHARGE LINE		
ELECTRONIC ENGINE INTEGRAL SHUTDOWN PROTECTION SYSTEM		
JACOBS COMPRESSION BRAKE		
RH OUTBOARD UNDER STEP MOUNTED HORIZONTAL AFTERTREATMENT SYSTEM ASSEMBLY WITH RH B-PILLAR MOUNTED VERTICAL TAILPIPE		
ENGINE AFTERTREATMENT DEVICE, AUTOMATIC OVER THE ROAD REGENERATION AND DASH MOUNTED REGENERATION REQUEST SWITCH		
11 FOOT 00 INCH (132 INCH+0/-5.9 INCH) EXHAUST SYSTEM HEIGHT		
STANDARD CURVE BRIGHT UPPER STACK(S)		
RH CURVED VERTICAL TAILPIPE B-PILLAR MOUNTED ROUTED FROM STEP		
13 GALLON DIESEL EXHAUST FLUID TANK	35	10
100 PERCENT DIESEL EXHAUST FLUID FILL		
STANDARD DIESEL EXHAUST FLUID PUMP MOUNTING		
NON-POLISHED ALUMINUM DIESEL EXHAUST FLUID TANK COVER	20	10



**Prepared for:**  
JOHNNY WOLF  
STOCK MADISON AL  
15151 AL HWY 20 SW  
MADISON, AL 35756  
Phone: 256-350-1630

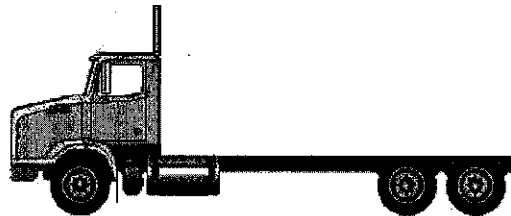
**Prepared by:**  
Johnny Wolf  
NEELY COBLE COMPANY, INC.  
Phone: 256-350-1630  
E-Mail:  
johnnyw@neelycoble.com

*A proposal for*  
**STOCK MADISON AL**

*Prepared by*  
**NEELY COBLE COMPANY, INC.**  
*Johnny Wolf*

*May 24, 2019*

**Western Star 4700SB**



Components shown may not reflect all spec'd options and are not to scale

Prepared for:  
JOHNNY WOLF  
STOCK MADISON AL  
15151 AL HWY 20 SW  
MADISON, AL 35756  
Phone: 256-350-1630

Prepared by:  
Johnny Wolf  
NEELY COBLE COMPANY, INC.  
Phone: 256-350-1630  
E-Mail:  
johnnyw@neelycoble.com

## SPECIFICATION PROPOSAL

	Description	Weight Front	Weight Rear
Price Level	WESTERN STAR 4700 PRL-18T (EFF:04/14/18)		
Data Version	SPECPRO21 DATA RELEASE VER 003		
Vehicle Configuration	4700 SET-BACK FRONT AXLE CHASSIS 2020 MODEL YEAR SPECIFIED SET BACK AXLE - TRUCK STRAIGHT TRUCK PROVISION LH PRIMARY STEERING LOCATION		
General Service	TRUCK CONFIGURATION DOMICILED, USA 50 STATES (INCLUDING CALIFORNIA AND CARB OPT-IN STATES) REFUSE SERVICE SANITATION BUSINESS SEGMENT DRY BULK COMMODITY TERRAIN/DUTY: 10% (SOME) OF THE TIME, IN TRANSIT, IS SPENT ON NON-PAVED ROADS MAXIMUM 8% EXPECTED GRADE MAINTAINED GRAVEL OR CRUSHED ROCK - MOST SEVERE IN-TRANSIT (BETWEEN SITES) ROAD SURFACE WESTERN STAR VOCATIONAL WARRANTY EXPECTED FRONT AXLE(S) LOAD : 18180.0 lbs EXPECTED REAR DRIVE AXLE(S) LOAD : 46000.0 lbs EXPECTED PUSHER AXLE(S) LOAD : 0.0 lbs EXPECTED GROSS VEHICLE WEIGHT CAPACITY : 64180.0 lbs		
Truck Service			



Full front bumper

yes

Two (2) front tow hooks - frame mounted

yes

#### FUEL TANKS AND EQUIPMENT

Minimum 80 gallon fuel tank mounted left side under cab

yes

#### FRONT TIRES, HUBS, AND WHEELS

11R22.5 Steer

Exceeds  
385/65R

Front disc wheel; 22.5"X9.00" 10- hub pilot 5.25 insert shand steel

22.5X12.25  
4.68 inset 10-HAND  
Aluminum  
IRON

Hubs: Steel

#### REAR DRIVE TIRES, HUBS, WHEELS

11R22.5, 14-ply

Exceeds - 16 ply

Rear dual disc wheels; 22.5X8.25" 10-hub pilot 2-hand HD steel

yes

#### CAB EXTERIOR

Air bag type rear cab suspension

yes

Dual air horns

yes

Dual heated mirrors

yes

LH and RH 8" convex mirrors mounted below primary mirrors

yes

#### CAB INTERIOR

Adjustable tilt and telescoping steering column

yes

Heater, defroster, and air conditioner

yes

Driver seat: air suspension, high back with head rest

Elite High Back Air Driver Seat  
Heated, 3 Chamber air Lumbar

2-man fixed back with integral head rest

yes

Interior Color: Beige or Gray

gray

### SAFETY FEATURES

Five (5) pound fire extinguisher mounted out board of driver seat

yes

Triangular reflectors without flares

yes

Rear Camera and backup alarm

yes

### PAINT

Cab Color: White

yes

Base/Clear

yes

### WARRANTY/SERVICE

Towing: Included in Price. 3 year unlimited with no cap

yes

3 year Full Engine Warranty Included in Price.  
\$0 Deductible. Includes Emissions/aftertreatment  
EW4 or equivalent

yes

Winning bidder must pickup and deliver the truck back when an issue arises.  
Not charging a pickup and delivery fee. This includes towing for a warrantable  
Repair.

yes

3 year guaranteed buyback price required. Turned in with unpriced specs  
prior to bid.

see attached

TC4 or equivalent chassis coverage

yes

State delivery time

60-90 DAYS  
After Receipt of  
order

### OPTIONS

Show extended warranty options

yes

### ADDITIONAL INFORMATION REQUIRED

Fuel mileage per gallon

N/A

Fuel emission amounts

N/A

The unit shall come equipped with a 15,000 pound reeving cylinder equipped with a lip and latch kit.

yes

## CHASSIS SPECIFICATIONS

### MODEL

New and unused conventional chassis

yes

156.9" CA

yes

Wheelbase: to accommodate body builder

yes

### ENGINE

370 HP diesel engine and 1250 LB/FT torque

Exceeds 450HP  
1650 lb/ft  
Torque

Radiator: Minimum 1500 square inch

yes

Engine brakes

Jacob  
yes compression  
Brake

Air cleaner: single element

yes

Fan Clutch: Air On/Off type

yes

Alternator: Minimum 12V 135 AMP

Exceeds - 160AMP

Batteries: (3) 12 volt

yes - 2190CCA

13 Gallon diesel exhaust fluid tank

yes

Single horizontal RH muffler with cab mounted vertical tailpipe, under frame routing, outside rail.

yes

Muffler/tailpipe guard

yes

### TRANSMISSION AND EQUIPMENT

Allison 4000 RDS 6-speed automatic transmission with PTO provisions

4500RDS

Push button, electronic shift control

yes

Under mounted pump off of PTO. No front mount pump will be acceptable.

yes

Hot Shift PTO  
w/ Remote mount Pump

### FRONT AXLE AND SUSPENSION

I-beam type front axle 16,000 pound capacity or greater

Exceeds 20,000 lb.

Air cam 16.5" x 6", 24 square inch long stroke brake chamber

yes

Power steering, dual steering gears

- Two THP-60 power steering  
with RCH 45 Auxiliary gear

yes

18,000 pound leaf front suspension

Exceeds 20,000 lb.

Front shock absorbers

yes

### REAR AXLE AND SUSPENSION

Minimum 40,000 pounds

Exceeds 46,000 lb.

Axle ratio: to be determined by body builder & truck manufacturer

4.56

Drive Lines: 1800 main drive line, 1700 interaxle drive line

Equal - NXL 135, NXL 177

Rear Suspension: 46,000 LB suspension (No Air)

TufTrac 46,000 lb.

### BRAKE SYSTEM

Rear Brakes: 16.5 X 7

Exceeds - 16.5 x 8.62"

Long stroke 2 drive axles spring parking chambers

yes

Air dryer with heater

yes

Automatic slack adjusters

yes

### FRAME

Frame rails: minimum 1 1/32 X 3 1/4 X 10 15/16 inch 120 KSI

Exceeds 7 1/2 x 3 1/4 x 11 1/8  
with 114" C-channel

### CHASSIS



installed on both the curbside and street side of the hopper.

yes

### **PACKING MECHANISM**

Packing cycle control shall be mechanical, lever operated on the right hand side of the tailgate. A two lever design, the operator shall have the capability to start, stop, and Reverse the direction of any function at any time throughout the packing cycle.

yes

Packing mechanism control valve shall be centrally located within the upper confines of the hopper, under upper light cross members.

yes

The packing cycle time shall be no greater than 17-19 seconds.

yes

Packing mechanism shall consist of two primary structures, the upper packing Panel and the packing blade.

yes

### **UPPER PACKING PANEL**

The upper packing panel shall be mounted to the tailgate weldment with two (2) sets of upper and lower link arms. Each upper link arm shall be secured to the panel and tailgate with two (2) 2" diameter induction hardened C-1045 cold drawn steel pins. The lower link arms shall be connected to the tailgate with 2" diameter induction hardened C-1045 pins and to the panel with 2 5/16" heat treated, induction hardened 4340 cold rolled steel hinge pins.

yes

The upper packing panel shall be constructed from 3/16" 150,000 PSI minimum yield, 321 BHN abrasion resistant steel plate in all areas of refuse contact. The packing blade hinge lugs shall be constructed from 3" thick 50,000 PSI minimum yield steel plate.

yes

Primary compaction by the upper panel shall be accomplished with two (2) double acting 5" bore x 36" stroke hydraulic cylinders. Located outside of the hopper confines, the cylinders shall produce a minimum force of 73,600 pounds.

yes

Forward hinged side doors on each side of the tailgate shall provide access to the outside cylinders. The doors shall be easily opened without hand tools. The side doors shall prevent operator contact with the packing mechanism components as well as protect the components from the outside elements.

yes

### **PACKING BLADE**

The packing blade shall be mounted to and pivot on the upper panel hinge lugs with heat treated, induction hardened ASTM 4340 cold rolled 3" steel pins.

yes

The packing blade shall be constructed with 3/16" 150,000 PSI minimum yield, 321 BHN, abrasion resistant steel plate and capable of resisting shearing and breaking forces of large objects during the compacting cycle.

yes

Tailgate side reinforcement shall consist of 6"x 1 7/8" 11 gauge, 50,000 PSI formed steel channels fully welded to the perimeter edge of the tailgate side sheets. An interlaced network of 6"x 1 7/8" gauge, 50,000 PSI and 6 5/8"x 1 7/8" 7 gauge, 80,000 PSI minimum yield formed steel channels shall also be fully welded to the tailgate side for superior support.

yes

Hopper floor shall be minimum 1/4" 150,000 PSI minimum yield 321 BHN abrasion resistant steel plate.

yes

Hopper floor lateral reinforcement shall consist of a 3/16" 80,000 PSI minimum yield formed "Z" channel cross member. Forward hopper reinforcements shall be provided by a lateral network of 3/16" 80,000 PSI and 3/8" 50,000 PSI minimum yield formed steel channel cross members.

yes

Hopper front compaction face shall be minimum 5/16" 150,000 PSI minimum yield 321 BHN abrasion resistant steel plate.

yes

Tailgate shall be equipped with heavy duty 1" diameter turnbuckles, one on each side of body, to secure the tailgate in the closed position against the body to prevent leakage.

yes

Two (2) grab handles (3/4" hot rolled steel bar) shall be located on each side of the tailgate for operator safety and comfort. One handle is to be mounted horizontally no less than 49" above the riding step. The other shall be mounted in the vertical plane, with the bottom edge no less than 44" above the steps. The latter shall also be attached to the rearward face of the perimeter of the tailgate reinforcement. Also, one grab handle across rear of tailgate. (If unit is equipped with a container handling attachment, the latter will be omitted.)

yes

The rear step shall be bolt-on design fabricated from 12 gauge, 3 diamond Grip Strut, slip resistant, self-cleaning material. Located on each side of the tailgate, they shall provide for a minimum of 396 square inches of footing area for a single rider. The steps must conform to ANSI standards.

yes

The tailgate shall be raised with two (2) single acting 4" bore x 26" stroke hydraulic cylinders. The cylinders shall incorporate an integral orifice, which will limit the descent speed of the tailgate in the event of hydraulic failure.

yes

The tailgate shall be equipped with one piece, removable rubber gasket. The gasket, which shall have a durometer rating of 35-45 and tensile strength of 1500-1800 PSI shall extend across the entire bottom width of the tailgate and provide for watertight seal vertically up the side for no less than 21".

yes

The hopper shall be formed from 3/16" 80,000 PSI high tensile steel.

yes

The rear hopper area shall be equipped with a tailgate-to-driver buzzer system

yes

from coming in contact with the ejector cylinder.

The ejector panel shall extend and retract without the assistance of clamp bars or associated hardware.

yes

yes

Smooth movement of the ejector panel in the body shall be achieved with two (2) cast alloy shoes on each side of the ejector panel. Shoe castings shall conform to specification 28C358-A0201 possessing a minimum contact surface of 18 square inches each shoe side and having a minimum hardness of 260 BHN. Each shoe shall pivot on a minimum 2" diameter, C1045, removable cold drawn stub pin held within the fully boxed 4"x12" base frame of the ejector panel. Four (4) shoes shall be provided for each ejector panel and shoes must be replaceable without removing the ejector panel as refuse is packed against it.

yes

Ejector guide bottom edge shall be located .375" above longitudinal floor corners. The guide channel shall have interior dimensions of 3.5" x 4.2". The top flange of the guide channel shall be reinforced with a 45 degree plate, which shall also serve as a self-cleaning device. The track shall also minimize pivotal movement of the ejector panel as refuse is packed against it. Plastic (non-metallic) ejector shoe material is not acceptable.

yes

The rod end of the ejector cylinder shall be pin mounted at the front of the body to the main lateral bolster of the body longitudinal members thus affording maximum resisting bending movement.

yes

## CONTROLS

The ejector panel and tailgate raise controls shall be mounted outside the body on the front left hand side of the body. Direct connection of the control handles to the valve spool shall exist to minimize moving parts and allow for ease of service.

yes

An electrical device shall be supplied to automatically raise the engine speed to the proper RPM during the packing cycle.

yes

An additional throttle advance switch shall be located at the front left hand side of the body within hands reach of the ejector and tailgate raise controls.

yes

Power take off controls shall be conveniently mounted in the cab, preferably to right side of the driver.

yes

## HYDRAULIC SYSTEM

Front bumper mounted, crankshaft driven gear pump, producing 42 GPM @ 1200 RPM, and rated at 3000 PSI.

NO -  
per statement  
on pg. 11  
under Transmissor

Air actuated dry valve, controlled by in-cab switch, with electronic over speed protection shall be provided. Chassis must be equipped with Allison World Tech

Hot shift  
pto w/Remote  
mount Pump

Pre-compaction by the packing blade shall be accomplished with two (2) double acting, 5 1/4" bore x 24" stroke cushioned hydraulic cylinders. Located inside the hopper confines, the packing blade cylinders shall produce a minimum force of 111,670 pounds (33.25 PSI).

yes

All packing mechanism links shall have replaceable hardened steel bushings for extended service life. Wear shoes or roller shall not be acceptable in high compaction packing systems.

yes

All cylinder and link pivot pins shall be kept in place with minimum Grade 5 retaining bolts, lock nuts, and lock collars.

yes

Each hopper full of material shall be compressed between the packing blade, upper panel and ejector panel. The ejector panel shall be automatically advanced by an ejector unload valve. No operator attention shall be required to advance the ejector panel as the body fills.

yes

The packing mechanism shall be equipped with an "automatic crowd" pressure sensing device, which will enable the packing mechanism to find a path through the load which will neither stall the mechanism nor damage the structure thereby prolonging the hopper floor and mechanism life.

yes

#### **DISCHARGE OF LOAD**

The load shall be discharged by means of a positive ejection system. A double acting, telescopic hydraulic cylinder shall extend and retract the ejector panel the full length of the body. The ejector cylinder shall attach to the body and the ejector panel via cold-drawn, C1045, pins having a minimum diameter of 1 1/2" and positioned diagonally to minimize possible damage from objectionable liquids.

yes

The ejector cylinder shall have the following dimensional characteristics:

#### **STAGES**

4

yes

#### **BORE**

6"

yes

#### **STROKE**

134.1"

yes

The ejector panel face sheet shall be constructed from 11 gauge hi-tensile steel. Four (4) hi-tensile formed steel channels shall span horizontally, with one (1) trapezoidal cross member at floor level. The vertical panel corner posts shall be 0.375 hi-tensile steel. A 7 gauge hi-tensile steel protective covering shall be provided to keep refuse

RDS transmission.

yes

The pump must run quietly. Gearing shall be selected for minimum engine RPM compatible with recommended pump RPM for correct operating pressure and rates of flow for the refuse body.

yes

The hydraulic pump shall be designated to operate continuously with peak loading at frequent, short intervals.

yes

The hydraulic system shall incorporate adjustable relief valves to protect all components from excessive pressure and overloads.

yes

All hydraulic tubes will be securely clamped to prevent vibration, abrasion, and excessive noise.

yes

All hydraulic tubes running the length of the body shall be routed over the roof on the street side bias of the body.

yes

All hydraulic hoses shall conform to S.A.E. standard for designed pressure. Bends shall not be less than recommended by S.A.E. standards. Flat spots in hoses will not be acceptable.

yes

All high-pressure hoses shall be sheathed with fabric protective covering.

yes

The hydraulic oil reservoir shall be frame mounted underneath the body and shall have a gross capacity of 50 gallons filled with hydraulic fluid.

yes

The tank shall be complete with a screened fill pipe and cap, filter breather, clean out cover, level & temperature sight gauge, and shut off valve.

yes

The hydraulic system shall be protected by a five (5) micron return line filter along with a 100 mesh (140 micron) reusable oil strainer in the suction line.

Exceeds (3) micron

The return line filter shall also include an in-cab filter by-pass monitor, which shall alert the operator or service personnel when the filter is in need of replacement.

yes

All multi-spool control valves shall be of a section design such that servicing would not require replacement of the entire valve assembly.

yes

#### **HYDRAULIC CYLINDERS**

All cylinders must have a working pressure rating of no less than 2500 PSI.

yes

Inside packing cylinders must be of the internal cushion design so that hydraulic shock and audible noise is minimized. This shall be accomplished by a design, which will decrease the speed of the cylinder for the last one-half (1/2") inch

of cylinder stroke on both directions of travel.

yes

Rods of inside and outside packing cylinders must be induction hardened to a surface hardness of 55-65 Rockwell C scale.

yes

Rods of all cylinders shall be chrome plated.

yes

All packing cylinder end lugs shall be forged steel material.

yes

## **ELECTRICAL**

All electrical wiring connectors to be automotive double-seal with wiring in split convoluted loom.

yes

All wiring connections to be soldered with rubber-molded covering or crimp type connectors with shrink-wrap. Unprotected wiring in any application is not acceptable.

yes

All electrical limit switches shall be epoxy impregnated to minimize effects of excess moisture.

yes

## **LIGHTING**

Clearance, back up, and directional lights shall be Lexan lens, shock mounted in a protective housing. The whole unit shall be pop out and replaceable.

yes

All lights shall be provided in accordance with FMVSS#108, ANSI Z245.1-1999 plus mid body turn signals on each side of the body and a center brake light on the rear.

yes

## **PAINT**

The entire body shall be properly cleaned of all dirt, grease, and weld slag before painting. Cleaning shall be in keeping with accepted industry practices.

yes

A primer coat and acrylic urethane enamel topcoat is to be applied.

yes

The body is to be equipped with ICC regulation high visibility tape. The reflective tape is to be installed on lower body side perimeter and across rear hopper lip.

yes

The body color shall be white as to match the cab.

yes

## **ADDITIONAL FEATURES**

Tailgate shall be equipped with an amber strobe light.

yes

A cable system with hook to load city dumpsters

yes

**City of Laurel**  
**Minimum Specifications for a 2020 New 25 Cubic Yard**  
**High Compaction Rear Loading Class 8 Garbage Truck**

All bidders must fill in all blanks: YES, if meeting or exceeding specification; NO, if exceptions are taken to a certain specification. Any exceptions taken must be explained in detailed writing on bidders own letterhead and attached to the bid submitted. Bidder must attach a copy of warranty on chassis, drive train, and components.

**CAPACITY**

The packer body shall have a capacity, excluding the receiving hopper of not less than 25 cubic yards.

yes

The hopper shall have a capacity of three and ninety-four hundredths (3.94) cubic yards.

yes

The structural integrity of the body shall allow high density loading of up to 1,000 pounds per cubic yard of normal refuse.

Exceeds  
1,000 lbs +

**BODY DIMENSIONS**

Maximum width, outside 96".

yes

Maximum overall length of the body and tailgate combined shall not exceed the following: 270".

yes

Body width, inside 89".

yes

Body height, inside 79".

yes

Body height, outside (above chassis) 96".

yes

**BODY CONSTRUCTION**

The body interior shall have a smooth floor without a trough. The sides and roof shall also be smooth. (No Exception).

yes

The body shall have a street side access door to allow entrance to body for service.

yes

In order to prevent damage from corrosion and fire, no hydraulic cylinders, valve or other hydraulic components shall come in contact with refuse packed into the body.

yes



Body sides & roof shall be of curved stress skin construction interfacing with the corner mainframe bolsters. Rear bolsters shall be 5" x 20" formed channel @ the major upper & lower connecting points of the mainframe. Front bolster shall be a 5" x 8" formed channel @ the major upper & lower connecting points. All sidewall and roof members shall be continuous welded.

yes

Body roof shall be minimum 8 gauge, 80,000 PSI minimum yield hi-tensile steel sheet, fully welded to a full length 11 gauge 50,000 PSI yield roof crown rail to contain and dissipate forces equally through the body structure.

yes

Body sides shall be minimum 8 gauge, 80,000 PSI minimum yield high tensile steel sheet, fully welded to roof crown rail and to a 4.7" x 18" floor skirt rail.

yes

Rear mainframe body side bolsters shall be a minimum 3" x 20" and contoured shaped to sidewall with minimum 7 gauge 80,000 PSI minimum yield. Reinforcement bolsters shall be full welded to the curved body side sheets.

yes

Body floor shall be flat full width and must not have inboard guide rails or a trough. Floor shall be a minimum 7 gauge, 80,000 PSI minimum yield steel sheet.

yes

Floor longitudinals (long members) shall be a formed trapezoidal shape 9.6" x 11" with a 3.3" base sill of 7 gauge, 80,000 PSI minimum yield formed steel channels and shall be continuous welded to the floor sheet.

yes

Floor cross members shall be 3" x 6" x 7 gauge, 80,000 PSI minimum yield steel channels. Cross members shall be interfaced through the long members on approximately 18" centers to fully support the floor. Cross members shall be full width, single piece. (No Exceptions).

yes

#### TAILGATE DIMENSIONS

Maximum overall width at the hopper opening shall be 84 1/2".

yes

Inside tailgate loading width shall be a minimum of 80".

yes

Hopper opening height shall be a minimum of 55".

yes

Loading sill height below chassis rail shall be 3.8" exclusive of any container handling mechanisms.

yes

Minimum overall height above the chassis frame with the tailgate raised: 207 1/2".

yes

#### TAILGATE CONSTRUCTION

Tailgate sides shall be single piece 3/16" 150,000 PSI minimum yield 321 BHN abrasion resistant plate steel.

yes



# 2018 Allison Transmission Coverage Pricing Guide

MOTORHOME SERIES™		Total Coverage*
Model	Vocation	Years of Coverage (Standard Limited Warranty Partnership Coverage)
1000 MH	Motorhome/RV	5
1000 MH xFE	Motorhome/RV	5
1350 MH	Motorhome/RV	5
1350 MH xFE	Motorhome/RV	5
2100 MH	Motorhome/RV	5
2100 MH xFE	Motorhome/RV	5
2200 MH	Motorhome/RV	5
2200 MH xFE	Motorhome/RV	5
2350 MH	Motorhome/RV	5
2350 MH xFE	Motorhome/RV	5
2500 MH	Motorhome/RV	5
2500 MH xFE	Motorhome/RV	5
2550 MH	Motorhome/RV	5
2550 MH xFE	Motorhome/RV	5
3000 MH	Motorhome/RV	5
3000 MH R**	Motorhome/RV	5
4000 MH	Motorhome/RV	5
4000 MH R**	Motorhome/RV	5

If the transmission is OEM factory filled with Allison Approved TES 295® transmission fluid, the end-user is automatically registered, at no additional cost, for Extended Transmission Coverage, which provides coverage of 5 years/200,000 miles and 100% parts and labor. Use of Allison Approved TES 295® transmission fluid and Genuine Allison Filters is required to maintain Extended Transmission Coverage. Failure to meet these guidelines will result in only Standard Limited Warranty coverage.

\* Total Coverage: Sum of Standard Limited Warranty and Partnership Coverage.

Included in acquisition price of the transmission

\*\* Retarder Option

SPECIALTY SERIES™		Total Coverage*	Extended Transmission Coverage**
Model	Vocation	Years of Coverage (Standard Limited Warranty Partnership Coverage)	3 Years
1000 SP	Specialty/Military	2	\$483
1350 SP	Specialty/Military	2	\$488
2100 SP	Specialty/Military	2	\$536
2200 SP	Specialty/Military	2	\$546
2350 SP	Specialty/Military	2	\$588
2500 SP	Specialty/Military	2	\$474
2550 SP	Specialty/Military	2	\$474
3000 SP	Specialty/Military	2	\$440
3000 SP R***	Specialty/Military	2	\$545
3200 SP	Specialty/Military	2	\$418
3200 SP R***	Specialty/Military	2	\$426
3500 SP	Specialty/Military	2	\$256
3500 SP R***	Specialty/Military	2	\$360
4000 SP	Specialty/Military	2	\$385
4000 SP R***	Specialty/Military	2	\$414
4500 SP	Specialty/Military	2	\$529
4500 SP R***	Specialty/Military	2	\$499
4700 SP	Specialty/Military	2	\$661
4700 SP R***	Specialty/Military	2	\$784
4800 SP	Specialty/Military	2	\$748
4800 SP R***	Specialty/Military	2	\$1,026

\* Total Coverage: Sum of Standard Limited Warranty and Partnership Coverage.

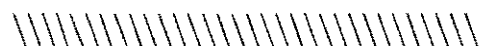
Included in acquisition price of the transmission

\*\* Extended Transmission Coverage: Available for purchase through Allison Authorized Distributors and Dealers to increase coverage

\*\*\* Retarder Option

## Vocational Model Warranty Parchments

HIGHWAY SERIES™ (HS)	SE0617
RUGGED DUTY SERIES™ (RDS)	SE0617
PUPIL TRANSPORT/SHUTTLE SERIES™ – SCHOOL BUS (PTS)	SE0610
PUPIL TRANSPORT/SHUTTLE SERIES – SHUTTLE BUS/OTHER BUS (EXCLUDING TRANSIT, INTERCITY/COACH) (PTS)	SE0614
EMERGENCY VEHICLE SERIES – FIRE APPARATUS (EVS)	SE0616
MOTORHOME SERIES™ – MOTORHOME (MH)	SE0612
TRUCK RV SERIES™ (TRV)	SE0612
OIL FIELD SERIES™ (OFS)	SE0623
SPECIALTY SERIES™ (SP)	SE0705



Q. During my Partnership and Extended Coverage periods, will Allison Transmission cover repairs if I do not use an Allison Approved TES 295\* transmission fluid AND Genuine Allison Filters?

A. No.

Q. Where can I purchase Extended Coverage?

A. You can purchase the coverage from any Allison Authorized Distributor or Dealer.

Q. When do I purchase Extended Coverage?

A. You can purchase the coverage at the time the vehicle is delivered or within 12 months of vehicle delivery.

Q. How do I pay for this Extended Coverage?

A. You may include the cost with the purchase of your vehicle (with dealer approval) or simply write a check to the Allison Authorized Distributor or Dealer.

Q. Will regears be accepted in this program?

A. Yes, as long as they are new Allison transmissions in approved applications and the Extended Coverage is purchased within 12 months of purchase of the new Allison transmission.

Q. Do I have to return to the selling outlet to obtain service?

A. No. You may select any Allison Authorized Distributor or Dealer offering vehicle transmission service.

Q. If I decide to sell or trade in my vehicle before my coverage expires, can the remaining coverage be transferred to my new transmission?

A. No. The remaining coverage is not transferable to your new transmission. The Extended Coverage purchased stays with the transmission. There is no need for transfer papers to be filed.

Q. If I take delivery of a new vehicle from an outlet that does not make Extended Coverage available, am I still eligible to purchase the coverage?

A. Yes. Contact your nearest Allison Authorized Distributor or Dealer to purchase the coverage.

Q. Are towing charges to the nearest Allison Transmission authorized service outlet covered by Extended Coverage?

A. Yes, if your vehicle is disabled or if towing is necessary to prevent further damage to your transmission.

Q. Is the support equipment purchased from Allison Transmission for original installations covered by Extended Coverage?

A. Yes, support equipment supplied by Allison Transmission to the OEM is covered.

Q. Are the electronic components purchased from Allison Transmission covered by Extended Coverage?

A. Yes.

Q. What coverage is offered on the TC10?

A. TC10 has a 5-year/750,000-mile warranty, whichever occurs first. There is currently no Extended Transmission Coverage offered for the TC10.

## Extended Coverage Vocation Codes

<b>P&amp;D AND BEVERAGE</b>	<b>SHUTTLE BUS</b>	<b>FIRE AND EMERGENCY</b>
ST09 P&D Beverage	BU08 Bus Shuttle	ST02 Ambulance-Emergency/Support Vehicles
ST10 P&D Tanker Fuel/Propane/Pool	BU09 Bus Other	ST03 Fire Articulated
ST11 P&D Household Moving		ST04 Fire Pump
ST12 P&D Postal	<b>REFUSE PACKER</b>	ST05 Fire Other
ST13 P&D Other	ST15 Refuse Packer-Landfill	
<b>MOTORCOACH</b>	ST16 Refuse Packer-No Landfill	<b>UTILITY AND OTHER</b>
BU03 Coach Inter-city	<b>AGRICULTURE</b>	ST18 Snow Plow
BU05 Coach Tour	AG01 Tractor-Farm	ST19 Tree Service/Lawn Care/Landscaping
<b>MOTORHOME</b>	AG02 Hay Squeezers/Other	ST20 Utility With Bucket/Auger/etc.
BU04 Motorhome	AG03 Spreader/Sprayer	ST21 Wrecker
<b>TRUCK-RV</b>	<b>DUMP TRUCKS/MIXERS</b>	ST22 Straight Truck-Other
ST14 Truck-RV	ST01 Dump Truck-Construction	ST01 Tractor-Single Axle
<b>SCHOOL BUS</b>	ST06 Dump Truck-Highway Maintenance	ST02 Tractor-Tandem Axle
BU06 Bus School-Front Engine	ST07 Concrete Mixer	ST03 Tractor-Other
BU07 Bus School-Rear Engine	<b>MILITARY</b>	ST08 One-Way Rental
<b>OIL FIELD SERVICES</b>	ST02 Military	AG00 Feeding Truck
OE05 Accessory Power		SP01 Aircraft Support
OE06 Propulsion		SP03 Dock Support
		SP04 Street Sweeper
		SP05 Special-Other
		ST17 Refuse Roll-on/Roll-off

## Allison Transmission Coverage Pricing Guides

2018 Transmission Coverage Pricing Guide SE8096EN

One Allison Way  
Indianapolis, Indiana, USA 46222-3271

Information or specifications subject to  
change without notice or obligation.

allisontransmission.com

SE8096EN (2018/03)  
ISO/TS 9000 and ISO 14001 Certified

© 2018 Allison Transmission Inc.  
All Rights Reserved.



2018 Allison Transmission Coverage Pricing Guide

RUGGED DUTY SERIES™		Total Coverage*	Extended Transmission Coverage**	
Model	Vocation	Years of Coverage (Standard Limited Warranty + Partnership Coverage)	2 Years	4 Years
1000 RDS	P&D and Beverage	3	\$357	N/A
	Utility and Other	3	\$357	N/A
	Dump Trucks/Mixers	3	\$278	N/A
	Agriculture	3	\$278	N/A
1000 RDS xFE	P&D and Beverage	3	\$357	N/A
	Utility and Other	3	\$357	N/A
	Dump Trucks/Mixers	3	\$278	N/A
	Agriculture	3	\$278	N/A
1350 RDS	P&D and Beverage	3	\$313	N/A
	Utility and Other	3	\$478	N/A
	Dump Trucks/Mixers	3	\$478	N/A
	Agriculture	3	\$478	N/A
1350 RDS xFE	P&D and Beverage	3	\$313	N/A
	Utility and Other	3	\$478	N/A
	Dump Trucks/Mixers	3	\$478	N/A
	Agriculture	3	\$478	N/A
2100 RDS	P&D and Beverage	3	\$541	\$758
	Utility and Other	3	\$541	\$758
	Dump Trucks/Mixers	3	\$536	\$750
	Agriculture	3	\$536	\$750
2100 RD xFE	P&D and Beverage	3	\$541	\$758
	Utility and Other	3	\$541	\$758
	Dump Trucks/Mixers	3	\$536	\$750
	Agriculture	3	\$536	\$750
2200 RDS	P&D and Beverage	3	\$536	\$750
	Utility and Other	3	\$536	\$750
	Dump Trucks/Mixers	3	\$536	\$750
	Agriculture	3	\$536	\$750
2200 RDS xFE	P&D and Beverage	3	\$536	\$750
	Utility and Other	3	\$536	\$750
	Dump Trucks/Mixers	3	\$536	\$750
	Agriculture	3	\$536	\$750
2300 RDS	P&D and Beverage	3	\$549	\$769
	Utility and Other	3	\$549	\$769
	Dump Trucks/Mixers	3	\$549	\$769
	Agriculture	3	\$549	\$769
2350 RDS	P&D and Beverage	3	\$544	\$761
	Utility and Other	3	\$544	\$761
	Dump Trucks/Mixers	3	\$544	\$761
	Agriculture	3	\$544	\$761
2350 RDS xFE	P&D and Beverage	3	\$544	\$761
	Utility and Other	3	\$544	\$761
	Dump Trucks/Mixers	3	\$544	\$761
	Agriculture	3	\$544	\$761
2500 RDS	P&D and Beverage	3	\$468	\$656
	Refuse Packer	3	\$910	\$1274
	Utility and Other	3	\$468	\$656
	Dump Trucks/Mixers	3	\$468	\$656
2500 RDS xFE	P&D and Beverage	3	\$468	\$656
	Refuse Packer	3	\$910	\$1274
	Utility and Other	3	\$468	\$656
	Dump Trucks/Mixers	3	\$468	\$656
2550 RDS	P&D and Beverage	3	\$538	\$754
	Refuse Packer	3	\$1,045	\$1462
	Utility and Other	3	\$538	\$754
	Dump Trucks/Mixers	3	\$538	\$754
2550 RDS xFE	P&D and Beverage	3	\$538	\$754
	Refuse Packer	3	\$1,045	\$1462
	Utility and Other	3	\$538	\$754
	Dump Trucks/Mixers	3	\$538	\$754

RUGGED DUTY SERIES™		Total Coverage*	Extended Transmission Coverage**	
Model	Vocation	Years of Coverage (Standard Limited Warranty + Partnership Coverage)	2 Years	4 Years
3000 RDS	P&D and Beverage	3	\$473	
	Refuse Packer	3	\$919	
	Utility and Other	3	\$473	
	Dump Trucks/Mixers	3	\$473	
3000 RDS R***	P&D and Beverage	3	\$683	
	Refuse Packer	3	\$1,109	
	Utility and Other	3	\$683	
	Dump Trucks/Mixers	3	\$683	
3500 RDS	P&D and Beverage	3	\$478	
	Refuse Packer	3	\$928	
	Utility and Other	3	\$478	
	Dump Trucks/Mixers	3	\$478	
3500 RDS R***	P&D and Beverage	3	\$589	
	Refuse Packer	3	\$1,029	
	Utility and Other	3	\$589	
	Dump Trucks/Mixers	3	\$589	
4000 RDS	P&D and Beverage	3	\$851	
	Refuse Packer	3	\$1,120	
	Utility and Other	3	\$851	
	Dump Trucks/Mixers	3	\$851	
4000 RDS R***	P&D and Beverage	3	\$1,132	
	Refuse Packer	3	\$1,387	
	Utility and Other	3	\$1,132	
	Dump Trucks/Mixers	3	\$1,132	
4500 RDS	P&D and Beverage	3	\$802	
	Refuse Packer	3	\$1,022	
	Utility and Other	3	\$802	
	Dump Trucks/Mixers	3	\$802	
4500 RDS R***	P&D and Beverage	3	\$883	
	Refuse Packer	3	\$1,118	
	Utility and Other	3	\$883	
	Dump Trucks/Mixers	3	\$883	
4700 RDS	P&D and Beverage	N/A	N/A	
	Refuse Packer	3	\$1,517	
	Utility and Other	3	\$1,580	
	Dump Trucks/Mixers	3	\$1,212	
4700 RDS R***	P&D and Beverage	N/A	N/A	
	Refuse Packer	3	\$2,150	
	Utility and Other	3	\$1,828	
	Dump Trucks/Mixers	3	\$1,828	

\* Total Coverage: Sum of Standard Limited Warranty and Partnership Coverage.

Included in acquisition price of the transmission

\*\* Extended Transmission Coverage: Available for purchase through

Allison Authorized Distributors and Dealers to increase coverage

\*\*\* Retarder Option

**EMERGENCY  
VEHICLE  
SERIES™**

All Emergency Vehicle Series Models carry a  
5-year Standard Limited Warranty.  
See Warranty Parchment for exact coverage details.

# 2018 Allison Transmission Coverage Pricing Guide

HIGHWAY SERIES™		Total Coverage*	Extended Transmission Coverage**	
Model	Vocation	Years of Coverage (Standard Limited Warranty/ Partnership Coverage)	1 Year	2 Years
1000 HS	P&D and Beverage	4	\$198	\$406
	Utility and Other	4	\$134	N/A
1000 HS xFE	P&D and Beverage	4	\$198	\$406
	Utility and Other	4	\$134	N/A
1350 HS	P&D and Beverage	4	\$161	\$410
	Utility and Other	4	\$161	N/A
1350 HS xFE	P&D and Beverage	4	\$161	\$410
	Utility and Other	4	\$161	N/A
2100 HS	P&D and Beverage	4	\$239	\$631
	Utility and Other	4	\$186	N/A
2100 HS xFE	P&D and Beverage	4	\$239	\$631
	Utility and Other	4	\$186	N/A
2200 HS	P&D and Beverage	4	\$188	\$488
	Utility and Other	4	\$188	N/A
2200 HS xFE	P&D and Beverage	4	\$188	\$488
	Utility and Other	4	\$188	N/A
2300 HS	P&D and Beverage	4	\$188	\$749
	Utility and Other	4	\$188	N/A
2350 HS	P&D and Beverage	4	\$186	\$446
	Utility and Other	4	\$186	N/A
2350 HS xFE	P&D and Beverage	4	\$186	\$446
	Utility and Other	4	\$186	N/A
2500 HS	P&D and Beverage	4	\$253	\$541
	Utility and Other	4	\$186	N/A
2500 HS xFE	P&D and Beverage	4	\$253	\$541
	Utility and Other	4	\$186	N/A
2550 HS	P&D and Beverage	4	\$186	\$435
	Utility and Other	4	\$186	N/A
2550 HS xFE	P&D and Beverage	4	\$186	\$435
	Utility and Other	4	\$186	N/A
3000 HS	P&D and Beverage	4	\$281	\$821
	Utility and Other	4	\$281	N/A
3000 HS R***	P&D and Beverage	4	\$288	\$821
	Utility and Other	4	\$288	N/A
4000 HS	P&D and Beverage	4	\$410	\$1,270
	Utility and Other	4	\$410	N/A
4000 HS R***	P&D and Beverage	4	\$410	\$1,270
	Utility and Other	4	\$410	N/A
4500 HS	P&D and Beverage	4	\$410	\$1,496
	Utility and Other	4	\$410	N/A
4500 HS R***	P&D and Beverage	4	\$410	\$1,496
	Utility and Other	4	\$410	N/A

\* Total Coverage: Sum of Standard Limited Warranty and Partnership Coverage. Included in acquisition price of the transmission

\*\* Extended Transmission Coverage: Available for purchase through Allison Authorized Distributors and Dealers to increase coverage

\*\*\* Retarder Option

TRUCK RV SERIES™		Total Coverage*
Model	Vocation	Years of Coverage (Standard Limited Warranty/ Partnership Coverage)
3000 TRV P	Truck/Recreational	5
3000 TRV R	Truck/Recreational	5
3200 TRV	Truck/Recreational	5
3200 TRV R	Truck/Recreational	5
4000 TRV	Truck/Recreational	5
4000 TRV R	Truck/Recreational	5

\* Total Coverage: Sum of Standard Limited Warranty and Partnership Coverage. Included in acquisition price of the transmission

\*\* Retarder Option

PUPIL TRANSPORT/ SHUTTLE SERIES™		Total Coverage*	Extended Transmission Coverage**	
Model	Vocation	Years of Coverage (Standard Limited Warranty/ Partnership Coverage)	1 Year	2 Years
1000 PTS	School Bus	4	\$364	N/A
	Shuttle Bus	3	N/A	\$1,131
1000 PTS xFE	School Bus	4	\$364	N/A
	Shuttle Bus	3	N/A	\$1,131
1350 PTS	School Bus	4	\$361	N/A
	Shuttle Bus	3	N/A	\$1,131
1350 PTS xFE	School Bus	4	\$361	N/A
	Shuttle Bus	3	N/A	\$1,131
2100 PTS	School Bus	5	N/A	N/A
	Shuttle Bus	4	\$587	N/A
2100 PTS xFE	School Bus	5	N/A	N/A
	Shuttle Bus	4	\$587	N/A
2200 PTS	School Bus	5	N/A	N/A
	Shuttle Bus	4	\$593	N/A
2200 PTS xFE	School Bus	5	N/A	N/A
	Shuttle Bus	4	\$593	N/A
2300 PTS	School Bus	5	N/A	N/A
	Shuttle Bus	4	\$593	N/A
2350 PTS	School Bus	5	N/A	N/A
	Shuttle Bus	4	\$593	N/A
2350 PTS xFE	School Bus	3	N/A	\$522
	Shuttle Bus	4	N/A	\$522
2500 PTS	School Bus	5	N/A	N/A
	Shuttle Bus	4	N/A	N/A
2500 PTS xFE	School Bus	3	N/A	\$446
	Shuttle Bus	4	N/A	\$446
2550 PTS	School Bus	5	N/A	N/A
	Shuttle Bus	4	N/A	N/A
2550 PTS xFE	School Bus	3	N/A	\$517
	Shuttle Bus	4	N/A	\$517
3000 PTS	School Bus	5	N/A	N/A
	Shuttle Bus	4	N/A	N/A
3000 PTS R***	School Bus	5	N/A	N/A
	Shuttle Bus	4	\$473	N/A

Any Pupil Transport/Shuttle Series Coverage beyond Standard Limited Warranty does not have a mileage limitation. School Bus applications with a 2300/2350/2500/2550 PTS Series\* may have additional coverage. Contact your distributor for additional information.

\* Total Coverage: Sum of Standard Limited Warranty and Partnership Coverage. Included in acquisition price of the transmission

\*\* Extended Transmission Coverage: Available for purchase through Allison Authorized Distributors and Dealers to increase coverage

\*\*\* Retarder Option

OIL FIELD SERIES™		Total Coverage*	Extended Transmission Coverage**
Model	Vocation	Years of Coverage (Standard Limited Warranty/ Partnership Coverage)	Years
3500 OFS	Oil Field	2 Years/3,000 Hours	\$1,346
3500 OFS R***	Oil Field	2 Years/3,000 Hours	\$1,661
4500 OFS	Oil Field	2 Years/3,000 Hours	\$2,021
4500 OFS R***	Oil Field	2 Years/3,000 Hours	\$2,336
4700 OFS	Oil Field	2 Years/3,000 Hours	\$2,103
4700 OFS R***	Oil Field	2 Years/3,000 Hours	\$2,418
4750 OFS	Oil Field	2 Years/3,000 Hours	\$2,327
4750 OFS R***	Oil Field	2 Years/3,000 Hours	\$2,642

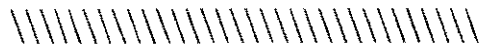
Standard Limited Warranty and Extended Transmission Coverage provide coverage up to a total of 5 years/7,500 hours.

\* Total Coverage: Sum of Standard Limited Warranty and Partnership Coverage. Included in acquisition price of the transmission

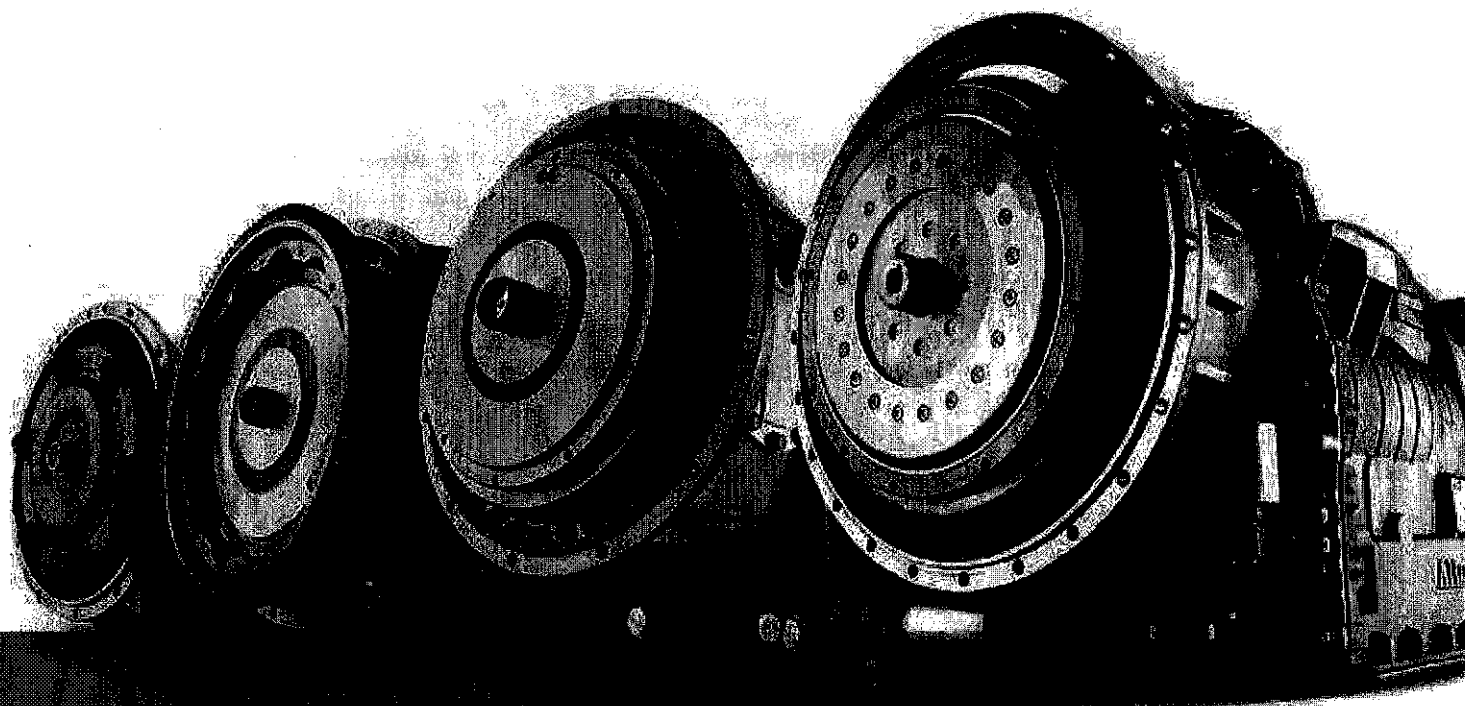
\*\* Extended Transmission Coverage: Available for purchase through Allison Authorized Distributors and Dealers to increase coverage

\*\*\* Retarder Option





# 2018 Allison Transmission Coverage Pricing Guide



Improving The Way The World Works



Terms and Conditions for

# Allison Transmission Coverage

## Transmission Coverage **Definitions And Requirements**

### Standard Limited Warranty

All Allison automatic transmissions carry a Standard Limited Warranty based upon Vocational Model Series and vocations\*. Standard Limited Warranty includes 100% parts and labor for the designated coverage period. Mileage limitations for specific Vocational Model Series and/or vocations may apply.

### Partnership Coverage

Some Allison-equipped vehicles purchased through Allison Partnerships carry Partnership Coverage. Partnership Coverage begins at the end of the Standard Limited Warranty period. Duration of Partnership Coverage varies depending upon the Vocational Model Series purchased.

**REQUIREMENTS:** Use of Allison Approved TES 295® transmission fluid and Genuine Allison Filters is required. Failure to use Allison Approved TES 295® transmission fluid and Genuine Allison Filters will result in no coverage for repairs beyond Standard Limited Warranty.

**NOTE:** Except as noted, all transmissions with Partnership Coverage beyond Standard Limited Warranty have 100% parts and labor coverage with no mileage limitations.

### Coverage Pricing

Extended Transmission Coverage must be purchased within one year of the delivery of the vehicle. Pricing shown in this brochure is applicable to Extended Transmission Coverage purchased in 2018.

Suggested retail prices are established for each transmission vocational model/vocation combination.

The terms and conditions under which Allison Transmission offers Extended Transmission Coverage are set forth on the back of the Extended Transmission Coverage Agreement Registration, available from any Allison Authorized Distributor or Dealer.

Pricing and/or coverage details shown in the following charts are subject to change without notice. All pricing is in US Dollars. For current prices and coverage information, go to [allisontransmission.com](http://allisontransmission.com).

### Extended Transmission Coverage

In addition to Standard Limited Warranty and Partnership coverage, Allison transmissions listed in this brochure are eligible for Extended Transmission Coverage. Extended Transmission Coverage begins at the end of the Standard Limited Warranty and Partnership coverage period and increases the coverage period. Extended Transmission Coverage is available for purchase through Allison Authorized Distributors and Dealers. Details for Extended Transmission Coverage are shown on the following charts.

**REQUIREMENTS:** Use of Allison Approved TES 295® transmission fluid\*\* and Genuine Allison Filters is required. Failure to use Allison Approved TES 295® transmission fluid and Genuine Allison Filters will result in no coverage for repair beyond Standard Limited Warranty coverage. Transmissions that are not OEM factory filled with Allison Approved TES 295® transmission fluid and Genuine Allison Filters must have Allison Approved TES 295® transmission fluid and Genuine Allison Filters installed at the time of Extended Transmission Coverage purchase. Transmissions that are not OEM factory filled with Allison Approved TES 295® transmission fluid, or transmissions operating with non-TES 295® fluids, must be drained and filled with Allison Approved TES 295® transmission fluid to achieve 100% concentration. One hundred percent concentration is not achieved until the second consecutive fluid change using Allison Approved TES 295® transmission fluid. The second consecutive fluid change must be achieved at the time of Extended Transmission Coverage purchase.

**NOTE:** Except as noted, all transmissions with Extended Transmission Coverage have 100% parts and labor coverage with no mileage limitations.

\* See Warranty Parchment for exact coverage details.

\*\* For a list of current Allison Approved TES 295® transmission fluids, go to: [allisontransmission.com](http://allisontransmission.com); click on Parts + Service, then Approved Fluids.

## 3.9 Change of Owner Address Information

To ensure Company's ability to reach the current Owner with Recall and Field Service campaign information, the Owner's information must be updated whenever there is a change to the Owner's name or address.

## 3.10 Product Improvement

Company reserves the right to make improvements or changes to the product at any time without incurring any obligation to make such changes or improvements to any other vehicle.

## 3.11 Owner's Responsibilities

DTNA provides Owner's Warranty Information booklets for Company products. When the Owner first receives a Company product, the service location should review the Owner's Warranty Information booklet(s) with the Owner. It is important that the new Owner becomes familiar with the contents about Warranty, parts replacement that affects emission controls, and maintenance service. It is the Owner's responsibility to ensure the product is maintained as outlined in the Driver's/Operator's and Maintenance Manuals and to maintain the vehicle so that it conforms to EPA regulations.

To initiate Warranty, the customer must complete and sign the Warranty Start Form (WAR275); service locations must attach the Warranty Start Form to the *Product Registration* screen in OWL.

As soon as a problem exists, the Owner is responsible for presenting the product to an Authorized Service Location. The Warranty repairs should be completed in a reasonable amount of time. The Owner should also be aware that DTNA may deny Warranty coverage if the product has failed due to abuse, neglect, improper maintenance, or unapproved modifications. DTNA recommends that Owners retain all receipts regarding product maintenance but Company cannot deny Warranty solely for the lack of receipts.

---

DISCLAIMER: Failure to read or distribute this information does not provide exemption from compliance with the information contained herein. Specifications are subject to change without notice. Intended for general information only, not offered as customer's Warranty.

- Rusting of painted bumpers
- Removal and/or replacement of decals, striping, and/or lettering not applied by Company

Specific areas of the vehicle are deliberately not painted or are not painted to any standard; paint repairs are not warrantable to such areas. These areas include:

- Underside of the hood, including the inside of the wheel wells
- Underside of the roof-mounted air fairings
- Underside of the exterior sun visor
- Inside of the side-mounted air fairings
- Inside of the bumper
- Aftertreatment devices

## Gloss

Gloss claims pertaining to gloss issues on vehicles painted with low-gloss colors (as identified in the Truck/Bus Sales Order) will not be covered under Warranty.

## Routine Maintenance

Routine maintenance, servicing, and adjustment, as defined in the applicable Vehicle Maintenance Manual and Driver's Manual, are excluded from Warranty.

Periodic adjustment or re-torque of wheel bearings, wheel lug nuts, and suspension U-bolts are considered maintenance adjustments and are not covered under Warranty.

Vibrations, squeaks, rattles, loose fittings/clamps, hose fitting leaks, loose nuts/bolts/screws, and loose electrical connections may develop during the initial trip(s) of the vehicle and these types of repairs/adjustments are covered under Warranty one (1) time during the applicable IOP unless excluded above.

Reminder: After the IOP, these developments are the result of use and their repair/adjustment activities are considered routine maintenance and thus excluded from Warranty.

## Shipped Loose Items and Components

During the manufacturing process, certain components are normally placed in the cab of the vehicle or strapped down to the chassis. It is the service location's responsibility to mount these shipped loose items in the correct location on the vehicle. Mounting the shipped loose items below will not be covered under Warranty.

These items include, but may not be limited to, the following:

- Aerodynamic wheel covers
  - Exception: Covers on Freightliner Cascadia trucks may be reimbursed
- Antennas
- Chrome lug nut covers
- Decals & paperwork
- Driver's pouch
- Fire extinguishers
- Jacks
- License plate brackets

DISCLAIMER: Failure to read or distribute this information does not provide exemption from compliance with the information contained herein. Specifications are subject to change without notice. Intended for general information only, not offered as customer's Warranty.



- Mattress
- Reflectors with flares
- Reflectors without flares
- Spare wheels/tires
- Tire inflation hoses
- Trailer cables (air/electrical)
- Winter fronts

## Tampering/Misuse

Conditions resulting from tampering, misuse, improper adjustments, alteration, accident, failure to use recommended fuel or non-performance of required maintenance services are not covered.

It is a violation of U.S. federal law to alter the engine, exhaust plumbing, after treatment system, diesel exhaust fluid system, or other vehicle components in any way that would bring the engine/vehicle out of compliance with certification requirements [Ref: 42 U.S.C. §7522(a)(3)]. It is the Owner's responsibility to maintain the vehicle so that it conforms to EPA regulations.

## Test Products

Any product(s) used in testing must be identified to the Warranty Department and accommodations must be made for claims that relate to the test item(s).

Any product used in endurance testing, such as the Altoona Test, are void of all Warranty, including but not limited to New Product Warranty, Aftermarket Parts Warranty, Extended Service Coverage, or any Company additional or used truck coverage.

## Tires and Tire Balancing

The tires are not covered under this Warranty, but are warranted separately by the tire manufacturer. Tire balancing is not covered under Warranty.

## Transmissions (Non-Company)

Allison transmissions and components are not covered under this Warranty, but are warranted separately by Allison. Information regarding Allison's warranty is provided for informational purposes only and is subject to change. For warranty or service information, contact Allison's authorized sales and service facility.

Eaton Hybrid transmissions are not covered under this Warranty.

## 3.8 Transfer of Warranty

This Warranty is transferable to a subsequent Owner if it has not expired.

To ensure the Owner receives proper Warranty recognition, the ownership information should be updated in OWL.

---

DISCLAIMER: Failure to read or distribute this information does not provide exemption from compliance with the information contained herein. Specifications are subject to change without notice. Intended for general information only, not offered as customer's Warranty.

Periodic adjustment or re-torque of wheel bearings, wheel lug nuts, and suspension U-bolts are considered maintenance adjustments and are not covered under Warranty.

Vibrations, squeaks, rattles, loose fittings/clamps, hose fitting leaks, loose nuts/bolts/screws, and loose electrical connections may develop during the initial trip(s) of the vehicle; associated repairs/adjustments are covered under Basic Warranty unless the distance at which the condition occurs exceeds the published maintenance interval for the component.

- Components included on a scheduled maintenance table that have loosened at a time or distance exceeding the first scheduled maintenance or outside the IOP, whichever is greater, are not covered under Warranty and are the responsibility of the customer.

Components Found Loose and Included on a Scheduled Maintenance Table	Prior to First Scheduled Maintenance	After First Scheduled Maintenance
Within IOP	File Claim	File Claim
Outside IOP	File Claim	Customer Responsibility

- Components that do not appear on scheduled maintenance tables are not subject to IOP limitations and are covered per the applicable coverage and exclusions.

Consumable items are addressed separately from IOP; see Consumable Parts elsewhere in this section for details.

Exclusions from Warranty during the IOP are:

- Cab, hood, and fender-mounted mirrors are adjusted at the factory but may be retracted by the transporter to prevent damage during transport. Subsequent adjustments and tightening of mirror mounting hardware are considered part of the routine preparation of the vehicle before Customer delivery. Claims for adjusting the mirrors or tightening of the attaching hardware will not be paid under Warranty during or after the IOP.
- Claims for re-routing of electrical wiring, hoses, or lines which meet DTNA's routing standards will not be paid under Warranty during or after the IOP. However, if during the IOP, evidence of a potential failure (e.g., rubbing or chaffing that would lead to a short in a wire or a hole in a hose/line) is found where a line, hose, or electrical wiring is mis-installed and is making contact with one of the following, a one-time claim for correcting the routing will be accepted:
  - Hot surface
  - Moving part
  - Sharp edge

Such claims should be filed with *Mis-Installed* as the *Cause* code; digital photos that clearly show evidence of rubbing or chaffing due to mis-installation must be available upon request.

**Note:** Preventative re-routing for other conditions not listed above is not considered warrantable. However, if a line, hose, or electrical wiring actually fails (i.e., leaks or shorts) due to rubbing or chaffing on any surface, such failures are covered per the applicable coverage and exclusions.

- Final preparation of the vehicle for Customer delivery to include cleaning/vacuuming interior of cab, washing windows, washing the exterior of the vehicle, and polishing exterior chromed or painted surfaces are considered as ordering location responsibilities. Claims for these activities will not be paid under Warranty during or after the IOP.

DISCLAIMER: Failure to read or distribute this information does not provide exemption from compliance with the information contained herein. Specifications are subject to change without notice. Intended for general information only, not offered as customer's Warranty.

## Misapplication of Product

The Warranty on any product used inconsistent with its specified vocation/application will be downgraded to the Warranty that is consistent with product use. Any and all claims associated with the misapplication of the product will be subject to chargeback.

## Miscellaneous Expenses

Premium charges and work not directly related to the repair or replacement of a warranted part are not covered under Warranty, unless specifically stated elsewhere in the applicable Warranty coverage. Examples include, but are not limited to:

- Federal, state, provincial, and local taxes
- Travel expenses
- Loss of revenue
- Customer labor, including overtime labor
- Downtime
- Driver's expenses
- Cost of rental equipment
- Loss of cargo, including perishable cargo
- General housekeeping supplies (e.g., shop rags, solvents, sweeping compounds, coveralls, etc.)
- Communication charges
- Towing/road call assistance
- Repair or replacement of optional items not sold or installed by company
- Removal or replacement of service location, body builder, or customer installed equipment
- Environmental fees, cleanup, or other charges
- Cost of emergency services

## Modifications to Original Equipment

Company does not warrant product modifications or equipment installations unless performed at a Company Custom Truck Services (CTS) Center. In addition, the extra time necessary to remove body builder-installed items and/or equipment to work on a warrantable repair is not covered under this Warranty unless Company sells the complete chassis/body/equipment as a package.

If service locations or Customers perform any product modifications or equipment installations, to the extent these modifications or equipment installations adversely affect other vehicle components or vehicle performance, Company shall not accept any product liability or claims under the terms of the product Warranty. These claims become the sole responsibility of the person performing the modifications or equipment installations.

## Paint

The following exclusions to paint warranty include, but are not limited to:

- Complete chassis re-painting to repair paint damages
- Damages occurring after in-service (e.g., from rock chips)
- Peeling/flaking caused by high-pressure washing or steam cleaning

DISCLAIMER: Failure to read or distribute this information does not provide exemption from compliance with the information contained herein. Specifications are subject to change without notice. Intended for general information only, not offered as customer's Warranty.

- Corrosion caused by salinity in the environment or corrosive salts and/or chemicals used on the road surface
- Corrosion caused by acid rain or other industrial fallout
- Corrosion due to improper prevention measures during storage or use
- Corrosion or rust on tone rings, rotors, or drums
- Corrosion due to environmental damage (including ocean spray); airborne fallout (includes chemicals, tree sap, etc.), or other atmospheric conditions or other acts of nature
- Corrosion due to improper use, misuse, or abuse, negligence, including improper or insufficient maintenance

## Damage

The following are not covered under Warranty:

- Damage caused by use of the vehicle in any application that is not approved or is inconsistent with build specifications
- Damage resulting from improper use or misuse or abuse, negligence, improper operation, improper or insufficient maintenance (including, but not limited to, failure to maintain vehicle as outlined in the Driver's/Operator's and Maintenance Manuals), overloading, unauthorized modifications, accidents, or operation at excessive speeds
- Environmental damage, including airborne fallout (including chemicals, tree sap, etc.), or other atmospheric conditions, hailstones, or other acts of nature
- Damage caused by road salts/chemicals or cleaning solvents, detergents, or compounds
- Storage deterioration including damage caused by improper or insufficient storage or maintenance
- Damage caused by road hazards or road conditions
- Damage caused during shipping/transport after initial delivery of vehicle
- Damages (including peeling or flaking) caused by high-pressure washing or steam cleaning
- Damages occurring after in-service (e.g., from rock chips)
- Damages caused by customer-installed sealer in air conditioning systems
- Damages caused by non-factory approved engine horsepower/torque upgrades
- Damage due to vibration associated with misapplication or improper operation of drivetrain components
- Damage due to terrorist activities
- Damage due to acts of war

## Engine

Any DTNA engine in a vehicle on which odometer mileage has been changed so the mileage cannot be readily determined is excluded from Warranty.

Non-DTNA engines, including all of its components as supplied by the non-Company engine manufacturer, are excluded from Warranty but are warranted separately by the manufacturer of the engine. For non-DTNA engine warranty or service, contact the engine manufacturer's authorized sales and service facility.

DISCLAIMER: Failure to read or distribute this information does not provide exemption from compliance with the information contained herein. Specifications are subject to change without notice. Intended for general information only, not offered as customer's Warranty.

## Engine Brakes, Air Compressors, and Other Proprietary Engine Components

The engine manufacturer installs most air compressors and engine brakes. Any failure of a proprietary engine component or Jake Brake® component must be filed directly to the engine manufacturer.

Failures on Company engines and non-proprietary engine components can be filed through DTNA.

## Exhaust System Clamps

During the early life of the vehicle or when the engine is cold, many exhaust clamps exhibit a soot trace. This condition is self-correcting and does not require adjustment, tightening, or replacement of the clamp. Claims for adjusting or tightening will not be paid under Warranty.

## Fifth Wheels

Adjustment of the locking mechanism, bushings, slide locking plungers, and the repair or replacement of lock guards are considered routine maintenance and are not covered under this Warranty.

## Glass, Mirrors, Lens

Conditions excluded from Warranty include but are not limited to:

- Breakage
- Chips
- Scratches
- Cracks

## Initial Operating Period

During a vehicle's Initial Operating Period (IOP), repair on components found loose and included on a scheduled maintenance table may be reimbursed by Company. The IOP for DTNA vehicles is as follows:

Make	IOP <sup>1</sup>
Freightliner, Western Star	Up to 15,000 miles/24 000 km <sup>2</sup>
FCCC	Up to 25,000 miles/40 000 km <sup>2</sup>
TBB Bodies and TBB Chassis <sup>3</sup>	Up to 6 months from in-service date

<sup>1</sup> IOP does not apply to powertrain components.

<sup>2</sup> The IOP begins at zero (0) distance; the in-service distance does not affect the IOP distance limits.

<sup>3</sup> TBB applications utilizing FCCC chassis retain the FCCC IOP separate from the TBB body.

Routine maintenance, servicing, and adjustment, as defined in the applicable Vehicle Maintenance Manual and Driver's Manual, are excluded from Warranty.

DISCLAIMER: Failure to read or distribute this information does not provide exemption from compliance with the information contained herein. Specifications are subject to change without notice. Intended for general information only, not offered as customer's Warranty.

## Chrome Surfaces, Aluminum, and Stainless Steel Components

The following items ARE covered under this Warranty:

- Chrome peeling off in sheets
- Chrome cut at mounting bolts due to over-torque at the factory
- Bubbles in the chrome that are not caused by rock chips and/or general rust conditions
- Isolated rust along seams or welds

The following items are NOT covered under this Warranty:

- General rust (e.g., rust on the unfinished backside of a bumper)
- Dimpling at the mounting bolts
- Staining, bluing, and/or yellowing that can be cleaned with a quality cleaning product
- Rust, pits, and/or nicks caused by road wash or road debris breaking the chrome surface
- Streaks/stains/corrosion caused by severe wash solutions or corrosive road salts/chemicals

Claims pertaining to failures of chrome surfaces, aluminum, and stainless steel components will not be processed unless a clear digital picture is provided that adequately shows the defect.

## Clutch Adjustment

Clutch adjustments are normally required due to clutch wear and are considered normal maintenance. However, if the clutch adjustment is found to be outside of Company specifications during, or prior to, product in-service, a claim will be accepted on a one-time basis.

Claims for clutch adjustments will not be accepted unless the adjustment is found to be outside of Company specifications using the special clutch adjustment measuring tools provided by Company (e.g., adjusting the clutch to satisfy feel will not be accepted as Warranty).

## Competition

Warranty will become void on any product that is used in competition including, but not limited to:

- Racing
- Tractor pulls
- Other motor sports

## Consumable Parts

Parts that are subject to consumption during their normal service life and are routinely replaced during normal maintenance services are covered up to 15,000 miles (24 000 km) for all DTNA vehicles except TBB bodies and chassis. TBB consumable parts are covered up to 30 calendar days from the date of in-service. These items are:

- Antennas (exception: satellite radio antennas)
- Ashtrays
- Belts
- Brake linings
- Cigarette lighter assembly

DISCLAIMER: Failure to read or distribute this information does not provide exemption from compliance with the information contained herein. Specifications are subject to change without notice. Intended for general information only, not offered as customer's Warranty.

- Clutch brake
- Clutch linings
- Data logger batteries
- Desiccant cartridges
- Fire extinguishers
- Flash tubes
- Fluorescent ballast and tubes
- Fuses
- Gladhand
- Hosetennas
- Light bulbs\*
- Lower center bumper air dam
- Mattresses
- Mud flaps
- Mud flap mounting brackets
- Caps (including, but not limited to, DEF, fuel, radiator, surge tank)
- Receiver-dryer filter
- Trailer air hoses
- Trailer electrical cables
- Windshield washer nozzles
- Wiper arms and blades (TBB makes - wiper blades only)

\* Sealed light and LED assemblies are not considered consumable.

The cost of consumable parts which are not reusable due to needed warrantable repairs is covered by this Warranty; examples include but are not limited to:

- Antifreeze
- Coolant
- Filters
- Fluids
- Grease/lubricants
- Oil

## Corrosion

Coverage provides Warranty against corrosion to any metal or metal alloy part of the vehicle. Rust or corrosion to specific components and/or caused by certain conditions are excluded from all Company Warranty coverage and will not be paid under Basic Vehicle, Cab Structure, Cab Corrosion, Aftermarket Parts Warranty, or Extended Service Coverage.

Exclusions to corrosion Warranty include, but are not limited to, the following:

- Corrosion caused by general rust (e.g., rust on the unfinished backside of a bumper)
- Surface rust caused by chips or scratches in the paint or chrome surfaces
- Corrosion caused by high-pressure washing, severe wash solutions, cleaning solvents, detergents, compounds

---

DISCLAIMER: Failure to read or distribute this information does not provide exemption from compliance with the information contained herein. Specifications are subject to change without notice. Intended for general information only, not offered as customer's Warranty.

Components <sup>1</sup>	Diesel Emission 2010		Gasoline Evaporative Emission 2011 <sup>2</sup>	Greenhouse Gas (GHG) 14/17	
	Detroit Engine	DTNA Installed <sup>3</sup>	DTNA Installed	Detroit Engine	DTNA Installed <sup>4</sup>
Oil Temperature Sensor	X			X	
Positive Crankcase Ventilation (PCV) Hose (Engine to Air Intake Pipe)			X		
Purge Control Valve			X		
Side Extenders					X
Spark Plugs <sup>5</sup>			X		
Spark Plug Wires			X		
Temperature-Barometric Air Pressure Sensor					X
Throttle Body			X		
Throttle Pedal			X		
Tires <sup>6</sup>					X
Transmission Control Module			X		
Transmission Speed Sensor			X		
Turbo Speed Sensor	X			X	
Turbocharger	X			X	
Vapor Lines			X		
Vehicle Speed Limiter					X
Vehicle Speed Sensor (Transmission Main Shaft)		X			X
Wait to Start Indicator/Lamp					X

<sup>1</sup> Per California Emission Control Systems Warranty Statement, DTNA must warrant the emission control system components for the vehicle in accordance with either Diesel Emission 2010 or Gasoline Evaporative Emission 2011, whichever is applicable.

<sup>2</sup> Coverage period is 5 years/50,000 miles (80 500 km), whichever occurs first.

<sup>3</sup> The following are excluded under Emissions coverage but are covered under standard New Vehicle Warranty coverage:

- ATS ACM Mounting Bracket and Protective Cover
- DEF Tank Mounting Brackets/Hardware
- DEF Pump Mounting and Protective Cover

<sup>4</sup> Diesel Emission 2010 components and emission-related defects in the marked components listed are included in this coverage. Coverage duration:

- Spark-ignition vehicles and light heavy-duty vehicles – 5 years/50,000 miles (80 500 km), whichever occurs first
- Medium and heavy heavy-duty vehicles – 5 years/100,000 miles (161 000 km), whichever occurs first

<sup>5</sup> Spark plugs are warranted under Basic Chassis coverage or until the first required maintenance, whichever comes first.

<sup>6</sup> Coverage period is 2 years/24,000 miles, whichever occurs first.

DISCLAIMER: Failure to read or distribute this information does not provide exemption from compliance with the information contained herein. Specifications are subject to change without notice. Intended for general information only, not offered as customer's Warranty.



## 3.7 Coverage Exclusions

The following components, parts, or conditions are specifically excluded from coverage under this Warranty.

**Note:** Parts found defective prior to installation must be filed as a Parts Adjustment Request (PAR) to the PDC.

### Aerodynamic Wheel Covers

Aerodynamic wheel covers are excluded from coverage under Warranty.

### Air Springs

Tolerance buildup can occur during the assembly process of the rear suspension and rear cab air springs, and can cause the springs to have the appearance of being crooked, misaligned, or improperly installed. This tolerance buildup is not detrimental to the operation of the vehicle and will not have an effect on either the quality of the ride or the durability of the components or vehicle. Straightening of these springs is not covered under Warranty.

### Alignment of Axles/Wheels/Steering Wheel

Each DTNA vehicle manufacturing plant uses an integrated alignment system to align axles and wheels and to center the steering wheel to DTNA specifications. Realignment or readjustment of these items, including steering stops and steering poppets, is not covered under Warranty.

Any special alignment settings at the request of the Owner must be handled between the service location and Owner after delivery from factory. These special adjustments are not covered under Warranty.

### Axle Breather Vents

During the manufacturing process, an oil run or drip stain may appear at the breather vent. Removing the vent, applying pipe sealant to the threaded vent fitting and re-installing the vent is unnecessary. Removing the axle breather vent and re-sealing the threaded fitting is not covered under this Warranty.

### Cab Interior Components

The repair or replacement of cab interior components that are rendered unserviceable due to normal wear or abuse are not covered under this Warranty.

These components include, but are not limited to:

- Curtains
- Floor coverings (including floor mats)
- Painted trim components
- Steering wheel
- Steering wheel wrap
- Upholstery
- Window shades

DISCLAIMER: Failure to read or distribute this information does not provide exemption from compliance with the information contained herein. Specifications are subject to change without notice. Intended for general information only, not offered as customer's Warranty.

Components <sup>1</sup>	Diesel Emission 2010		Gasoline Evaporative Emission 2011 <sup>2</sup>	Greenhouse Gas (GHG) 14/17	
	Detroit Engine	DTNA Installed <sup>3</sup>	DTNA Installed	Detroit Engine	DTNA Installed <sup>4</sup>
ATS Diesel Oxidation Catalyst (DOC) Inlet Temperature Sensor	X			X	
ATS DOC Outlet Temperature Sensor	X			X	
ATS Diesel Particulate Filter (DPF) Inlet Pressure Sensor	X			X	
ATS DPF Outlet Pressure Sensor	X			X	
ATS DPF Outlet Temperature Sensor	X			X	
ATS Doser Block Assembly	X			X	
ATS Electrically-Heated DEF Lines		X			
ATS Fuel Doser Valve	X			X	
ATS Oxidation Catalyst	X			X	
ATS Particulate Filter	X			X	
ATS Selective Catalytic Reduction (SCR) Catalyst	X			X	
Air Cleaner (Excludes Filter Element)			X		
Air Conditioning Component Leakage (Applies to Tractors Only)					X
Air Intake Pipes			X		
Air Intake Resonator			X		
Ambient Air Temperature (AAT) Sensor					X
Automatic Engine Shutdown Timer					X
Cam Sensor			X		
Camshaft Position Sensor	X			X	
Catalytic Converter			X		
Charge Air Cooler		X			
Charge Air Cooler Outlet Sensor	X			X	
Coolant Outlet Temperature Sensor	X			X	
Coolant Sensor			X		
Crank Sensor			X		
Crankshaft Position Sensor	X			X	
Data Link Connector		X	X		X
Delta P Sensor	X			X	

DISCLAIMER: Failure to read or distribute this information does not provide exemption from compliance with the information contained herein. Specifications are subject to change without notice. Intended for general information only, not offered as customer's Warranty.

Components <sup>1</sup>	Diesel Emission 2010		Gasoline Evaporative Emission 2011 <sup>2</sup>	Greenhouse Gas (GHG) 14/17	
	Detroit Engine	DTNA Installed <sup>3</sup>	DTNA Installed	Detroit Engine	DTNA Installed <sup>4</sup>
Engine Coolant Temp Sensor			X		
Engine Control Module (ECM)			X		
Evap Canister & Evap Canister Vent Solenoid			X		
Exhaust Gas Piping from the Turbocharger out to the Last ATD		X			
Exhaust Gas Recirculation (EGR) Cooler	X			X	
EGR Valve & Actuator	X			X	
Exhaust Manifold & Exhaust Manifold Gaskets			X		
Exhaust Pipes (Between Exhaust Manifold & Catalyst)			X		
Fuel Injectors	X		X	X	
Fuel Lines			X		
Fuel Rail			X		
Fuel Tank			X		
Fuel Tank Fairings					X
Fuel Tank Pressure Sensor			X		
Fuel Temperature Sensor	X			X	
Gap Reducing Fairings					X
Gas Cap			X		
High Pressure Fuel Pump	X			X	
Ignition Coils			X		
Intake Manifold Pressure Sensor	X			X	
Intake Manifold Temperature Sensor	X			X	
Intake Throttle Valve & Adaptor	X			X	
Knock Sensors			X		
Malfunction Indicator Lamp (MIL)		X	X		X
Manifold Absolute Pressure (MAP) Sensor			X		
Mass Air Flow Sensor			X		
Motor Control Module (MCM)	X			X	
Oxygen (O <sub>2</sub> ) Sensors			X		
Oil Fill Cap			X		

DISCLAIMER: Failure to read or distribute this information does not provide exemption from compliance with the information contained herein. Specifications are subject to change without notice. Intended for general information only, not offered as customer's Warranty.

THIS WARRANTY IS EXCLUSIVE AND IN LIEU OF ALL OTHER WARRANTIES OF ANY KIND WHETHER WRITTEN, ORAL, OR IMPLIED INCLUDING, BUT NOT LIMITED TO ANY WARRANTY OF MERCHANTABILITY OR FITNESS FOR A PARTICULAR PURPOSE. THIS WARRANTY SPECIFICALLY EXCLUDES ANY OTHER WARRANTIES OR CONDITIONS PROVIDED FOR BY LAW, WHETHER STATUTORY OR OTHERWISE.

COMPANY'S SOLE OBLIGATION UNDER THIS WARRANTY SHALL BE TO REPAIR OR REPLACE, IN COMPANY'S SOLE DISCRETION, ANY DEFECTIVE COMPONENT OR PART. SUCH REPAIR OR REPLACEMENT SHALL BE WITHOUT COST TO PURCHASER WHEN PERFORMED WITHIN THE APPLICABLE WARRANTY PERIOD (TIME, DISTANCE, OR HOUR LIMIT, WHICHEVER OCCURS FIRST).

Purchaser must notify Company, within the applicable Warranty period, of any failure of the product to comply with this Warranty and Purchaser must, at Purchaser's expense, promptly return the unit to an Authorized Service Facility for inspection and repair or replacement of any defect in material or workmanship occurring within the applicable Warranty period. During New Product coverage, Warranty reimbursement will not be paid on repairs performed by customers on their own vehicles without a current Customer Performed Warranty Agreement (CPWA).

The product must be maintained and serviced according to the prescribed schedules outlined in the Driver's/ Operator's and Maintenance Manuals. Receipted bills and other evidence showing that required maintenance and service have been performed are required by Company as a condition of this Warranty.

After the Company's obligations under this Warranty expire, all liabilities of Company to Purchaser under this Warranty shall terminate. Repairs made under this Warranty do not constitute an extension of the original Warranty period for the vehicle or for any specific component or part.

To the extent that any provision of this Warranty contravenes the law of any jurisdiction, such provision shall be inapplicable in such jurisdiction, and the remainder of the Warranty shall not be affected.

### 3.4 Purchaser's Exclusive Remedy

THIS WARRANTY SHALL BE THE PURCHASER'S SOLE AND EXCLUSIVE REMEDY AGAINST COMPANY, WHETHER IN CONTRACT, UNDER STATUTE (INCLUDING STATUTORY PROVISIONS AS TO CONDITIONS AS TO QUALITY OR FITNESS FOR ANY PARTICULAR PURPOSE OF GOODS SUPPLIED PURSUANT TO THE CONTRACT OF SALE), WARRANTY, TORT, STRICT LIABILITY, OR ANY OTHER LEGAL THEORY.

### 3.5 Limitation of Liability

COMPANY'S LIABILITY UNDER THIS WARRANTY IS LIMITED TO THE COST TO REPAIR OR REPLACE, IN COMPANY'S SOLE DISCRETION, THE DEFECTIVE COMPONENT OR PART THAT IN NO EVENT SHALL EXCEED THE FAIR MARKET VALUE OF THE PRODUCT AT THE TIME THE DEFECT IS DISCOVERED.

IN NO EVENT SHALL COMPANY BE LIABLE FOR SPECIAL, INDIRECT, INCIDENTAL, OR CONSEQUENTIAL DAMAGES INCLUDING, BUT NOT LIMITED TO, INJURIES TO PERSONS OR DAMAGE TO PROPERTY, LOSS OF PROFITS OR ANTICIPATED PROFITS, OR LOSS OF PRODUCT USE.

### 3.6 Emission Regulations

Vehicles and engines are designed, built, and equipped so as to conform, at the time of sale, with applicable regulations of the U.S. (Federal) Environmental Protection Agency (EPA), Emission Regulations under the Canada Motor Vehicle Safety Act in Canada, and the California Air Resources Board. Engines and vehicles are free from defects in material and workmanship which cause the engine to fail to conform with those regulations for the Warranty period. The Warranty period is 100,000 miles or five (5) years of engine operation, whichever occurs

DISCLAIMER: Failure to read or distribute this information does not provide exemption from compliance with the information contained herein. Specifications are subject to change without notice. Intended for general information only, not offered as customer's Warranty.

first, or the New Product Warranty, if the product warranty is longer for all emission-related components except tires and 24,000 miles or two (2) years, whichever occurs first, for the tires.

The Warranty obligations are not dependent upon the use of any particular brand of replacement parts. The Owner may elect to use non-Genuine Company Parts for replacement purposes. Use of replacement parts which are not of equivalent quality may impair the effectiveness of emission control systems. If other than Genuine Company Parts are used for maintenance replacements or for the repair of components affecting emission controls, the Owner should assure himself/herself that such parts are warranted by their manufacturer to be equivalent to Genuine Company Parts in performance and durability.

Conditions resulting from tampering, misuse, improper adjustments, alteration, accident, failure to use recommended fuel or non-performance of required maintenance services are not covered.

<b>Warranted Components</b> Unless otherwise noted, the Warranty period is 5 years/100,000 miles, whichever occurs first, or the New Product Warranty, if the product Warranty is longer for all emission-related components except tires.					
Components <sup>1</sup>	Diesel Emission 2010		Gasoline Evaporative Emission 2011 <sup>2</sup>	Greenhouse Gas (GHG) 14/17	
	Detroit Engine	DTNA Installed <sup>3</sup>	DTNA Installed	Detroit Engine	DTNA Installed <sup>4</sup>
Aerodynamic Roof Fairings					X
Aerodynamic Roof Fairings (Adjustable Height)					X
Aerodynamic Side Fairings					X
Aftertreatment System (ATS) Aftertreatment Control Module (ACM)	X			X	
ATS Aftertreatment Device (ATD) Wiring Harness	X			X	
ATS Diesel Exhaust Fluid (DEF) Coolant Supply Valve & DEF Coolant Lines		X			
ATS DEF Pump	X			X	
ATS DEF Fuel Rail Pressure Sensor	X			X	
ATS DEF Fuel Pressure Sensor (Low)	X			X	
ATS DEF Low Dosing Unit	X			X	
ATS DEF System Air Pressure Regulator & Associated Air Lines		X			
ATS DEF System Chassis Interface Harness		X			
ATS DEF Tank		X			
ATS DEF Tank DEF Level Gauge		X			
ATS DEF Tank DEF Temperature Sensor		X			
ATS DEF Tank Heater Tubing		X			
ATS DEF Temperature Sensor NOX Sensors	X			X	

DISCLAIMER: Failure to read or distribute this information does not provide exemption from compliance with the information contained herein. Specifications are subject to change without notice. Intended for general information only, not offered as customer's Warranty.

# New Product Limited Warranty Statements

The following section outlines standard Limited Warranty (Warranty) statements for all new Daimler Trucks North America LLC (DTNA; Company) products sold by DTNA and domiciled in the USA (50 states and Washington, D.C.) and Canada. As necessary, information below may be divided by DTNA product type (vehicle and powertrain components); this information is also included in the applicable Owner's Warranty Information Booklet.

Based on a product's specifications, Warranty coverage varies. For product-specific coverage information (time/distance amounts and component descriptions), enter a product serial number or vehicle identification number (VIN) on the *Coverage Information* screen in the OWL. General time/distance amounts and coverage descriptions are available by DTNA brand at *DTNAConnect > Warranty Lit > Other Warranty Documents > Coverages*.

## 3.1 New Vehicle Limited Warranty Statement

Under this New Vehicle Limited Warranty, DTNA warrants that each new vehicle will be free from defects in material and workmanship that occur under normal use within the applicable Warranty period, subject to certain limitations and exclusions as specified in this document.

This Limited Warranty applies only to new vehicles sold by an Authorized DTNA Service Location or ordered directly from DTNA; vehicles sold at auction or as a result of repossession retain the Warranty coverage from the original in-service date or factory invoice date if the vehicle has not been warranty registered.

DTNA reserves the right to reduce or remove coverage on vehicles in salvage condition.

This Warranty covers all components and parts unless specifically covered by other warranties or otherwise excluded by this document.

## 3.2 New Powertrain Component Statements

Engine components are covered by two types of warranties, the standard Limited Warranty and the Emission Control Systems Warranty, a requirement of the U.S. (Federal) Clean Air Act and Canada Motor Vehicle Safety Act. Axle and transmission components are covered by the standard Limited Warranty.

### New Powertrain Component Limited Warranty

The New Product Limited Warranty covers product repairs to correct any malfunction occurring during the Warranty period resulting from defects in material or workmanship. This Limited Warranty applies to the first retail purchaser and subsequent retail owners during the applicable Warranty period of new powertrain components manufactured by Detroit Diesel and/or supplied by Detroit Diesel or Detroit Diesel of Canada Limited (all which are collectively referred to as Detroit), subject to certain limitations and exclusions as specified in this document.

The Warranty period begins on the date the product is delivered to the first retail purchaser or put in use prior to sale at retail, whichever occurs first, and ends at the specified time or distance limits.

The cost of service supplies which are not reusable due to needed repairs is covered by this Warranty. Reasonable towing costs to the nearest authorized service facility are covered when due to warrantable failure, the powertrain component is either inoperable, cannot be safely operated, or continued operation would cause further damage to the product. Detroit will pay reasonable travel expenses for the repairing mechanic to travel to and from the repair site.

DISCLAIMER: Failure to read or distribute this information does not provide exemption from compliance with the information contained herein. Specifications are subject to change without notice. Intended for general information only, not offered as customer's Warranty.

## Engine Major Component Warranty Coverage

Engine major component(s) are covered 100%, which includes the cost to repair or replace only the failed major component. Engine major components include cylinder block/head casting, crankshaft, camshaft, main bearing bolts, flywheel housing, connecting rod assemblies, oil cooler housing, water pump housing, and air inlet housing.

DTNA will pay for the cost of any major component which is progressively damaged by the failure of another major component during the Warranty period. Review the new engine Warranty parchment for specific coverages.

Engines used in the on-highway application carry longer coverage on major components:

- MBE4000, Series 60, DD13, DD15, DD16 diesel fueled engines in on-highway applications (on-highway refers to a truck or coach designed and used to carry passengers and/or cargo, primarily on streets or paved highways)

## Emission Control Systems Warranty

For detailed information about product compliance with U.S. and Canadian law regarding design, build, and equipment, see the Emission Regulations section. Please note that emission-related components no longer covered under the Limited Warranty described above may still be covered under the Emission Control Systems Warranty.

### Certified Engines and Engine Parts

The Warranty period shall begin on the date the vehicle is delivered to the first retail purchaser or, if the vehicle is first placed in service as a demonstrator prior to sale at retail, on the date the vehicle is first placed in such service. Emission related defects in the genuine Company components listed in the Emission Regulations section, including reasonable related diagnostic costs, are covered by this Warranty.

Covered components and component terminology varies from engine to engine. Some scheduled maintenance is required (refer to the Owner's Emission Control Maintenance Service Chart which is included in the Warranty Information booklet). Please check the specific Warranty Information Booklet to determine which components are covered by the emissions control systems warranty.

Service Locations should refer to the applicable Engine Warranty Information booklet to determine if a particular component is covered by the Emission Control Systems Warranty, as the components covered differ on each engine type as well as from year to year.

## 3.3 Limitations

This Warranty does not apply to products that are sold or domiciled outside of the United States (50 states and Washington, D.C.) or Canada.

This Warranty does not apply to non-Detroit engines, Allison transmissions, tires, or other components or parts that are not manufactured by Company and that are warranted directly by their respective manufacturers. Progressive damage caused by these manufacturers' components to any other parts including, but not limited to, parts installed by Company is excluded from Company warranty coverage. With respect to the foregoing, Company makes no Warranty whether express, implied, statutory or otherwise including, but not limited to, parts installed by Company is excluded from Company Warranty coverage. With respect to the foregoing, Company makes no Warranty whether express, implied, statutory, or otherwise including, but not limited to, any Warranty of merchantability or fitness for a particular purpose.

DISCLAIMER: Failure to read or distribute this information does not provide exemption from compliance with the information contained herein. Specifications are subject to change without notice. Intended for general information only, not offered as customer's Warranty.

## 2.16 Paint (Body, Cab, Cowl)

### Body Paint

Coverage includes all factory-painted exterior body surfaces and defects such as orange peel, peeling/delaminating, cracking/checking, or loss of gloss due to cracking, checking, or hazing. *Excludes lack of gloss issues on vehicles painted with low gloss colors; the undersides of hoods and roofs and side mounted air fairings; and any damages to the paint or painted surface such as chips and scratches.*

### Cab Paint

Coverage includes all factory-painted surfaces (except those included in chassis paint coverage) and defects such as orange peel, peeling/delaminating, cracking/checking, or loss of gloss due to cracking, checking, or hazing. *Excludes lack of gloss issues on vehicles painted with low gloss colors; the undersides of hoods and roofs and side mounted air fairings; and any damages to the paint or painted surface such as chips and scratches.*

### Cowl Paint

Coverage includes all factory-painted exterior surfaces of cowl structure (except those included in chassis paint coverage) and defects such as orange peel, peeling/delaminating, cracking/checking, or loss of gloss due to cracking, checking, or hazing. *Excludes lack of gloss issues on vehicles painted with low gloss colors; the undersides of hoods and roofs and side mounted air fairings; and any damages to the paint or painted surface such as chips and scratches.*

## 2.17 Paint (Chassis)

Coverage includes all factory-painted surfaces on frame rails, crossmembers/gussets, front and rear bumpers, suspension components, powertrain components, drivelines, fuel tanks, air tanks, wheel end equipment, tool boxes, battery boxes, access steps, attaching brackets and hardware, and defects such as peeling or non-adhesion. *Excludes U-joints and any damages to paint or painted surface such as chips and scratches.*

## 2.18 Towing/Roadside Assistance

Coverage may include emergency roadside assistance or towing to the nearest Authorized Service Facility for a warrantable repair in a vehicle-down situation that prevents the safe and lawful operation of the vehicle. Verify coverage on the *Coverage Information* screen in OWL; coverage will display as a separate category. If the customer requests towing to a location beyond the distance to the nearest Authorized Service Location, the customer will be responsible for the additional charges.

## 2.19 Transfer Case

Coverage includes housing and all internally lubricated parts. *Excludes broken synchronizer pins, power take-offs (PTOs), airlines, gauge, clutch assemblies, driveline(s), and U-joints.*

---

DISCLAIMER: Failure to read or distribute this information does not provide exemption from compliance with the information contained herein. Specifications are subject to change without notice. Intended for general information only, not offered as customer's Warranty.



## 2.20 Transmission

### Detroit

Coverage includes all transmission components supplied/manufactured by Detroit. *Excludes maintenance items.*

### Non-Detroit

Coverage does not include Allison transmissions or Eaton Hybrid transmissions. Coverage includes housing and all internally lubricated parts, electric/air shift/control units, valves, gaskets, and seals. *Excludes broken synchronizer pins, PTOs, airlines, gauge, clutch assemblies, driveline(s), and U-joints.*

---

DISCLAIMER: Failure to read or distribute this information does not provide exemption from compliance with the information contained herein. Specifications are subject to change without notice. Intended for general information only, not offered as customer's Warranty.

## 2.4 Brightwork

Coverage includes all factory-installed components with chrome, polished aluminum, or polished stainless steel surfaces. *Excludes any damage to backside of bumpers, and concealed or inner surfaces.*

## 2.5 Cab Corrosion/Perforation

Coverage is limited to rust-through or perforation of the cab and integral sleeper structure and sleeper box due to corrosion from within. *Excludes all conditions of rust or corrosion that have not resulted in rust-through or perforation as well as surface rust or corrosion caused by non-adhesion and any damage to paint such as chips or scratches.*

## 2.6 Cab Structure

Coverage includes cab and integral sleeper structural components, structural components of factory-installed sleeper boxes, sheet metal panels, doors, and hoods. *Excludes all bolt-on components including door and hood hinges, latches, guides, and other mounting hardware.*

## 2.7 Corrosion

Coverage includes Warranty against corrosion to any metal or metal alloy part of the vehicle.

Excludes:

- Corrosion caused by general rust (e.g., rust on the unfinished backside of a bumper)
- Surface rust caused by chips or scratches in the paint or chrome surfaces
- Corrosion caused by severe wash solutions, cleaning solvents, detergents, compounds
- Corrosion caused by salinity in the environment or corrosive salts and/or chemicals used on the road surface
- Corrosion due to improper use, misuse, or abuse, negligence, including improper or insufficient maintenance
- Corrosion due to ocean spray
- Corrosion due to environmental damage, including airborne fallout (includes chemicals, tree sap, etc.), or other atmospheric conditions, or other acts of nature
- Corrosion due to damage caused by high-pressure washing
- Corrosion caused by acid rain or other industrial fallout
- Corrosion due to improper prevention measures during storage or use
- Corrosion or rust on tone rings, rotors, or drums

## 2.8 Cowl Corrosion

Coverage is limited to rust-through or perforation of the cowl due to corrosion from within. *Excludes all conditions of rust or corrosion that have not resulted in rust-through or perforation as well as surface rust or corrosion caused by non-adhesion and any damage to the paint such as chips or scratches.*

---

DISCLAIMER: Failure to read or distribute this information does not provide exemption from compliance with the information contained herein. Specifications are subject to change without notice. Intended for general information only, not offered as customer's Warranty.

## 2.9 Cowl Structure

Coverage includes cowl structural components, sheet metal panels, and hood. *Excludes all bolt-on components (e.g., hood hinges, latches, guides, or other mounting hardware).*

## 2.10 Crossmembers

Coverage includes crossmembers, gussets, and huck-mounting bolts that attach gussets to crossmembers and gussets/crossmembers to frame rails. *Excludes any bolt-on item attached with either conventional or huck bolts.*

## 2.11 Driveline

Coverage includes driveshaft tubing, U-joints, yokes, support bearings, and splines.

## 2.12 Frame Rails

Coverage is limited to breaking or cracking of factory-installed frame rails, frame rail liners, frame rail extensions, and any item(s) factory welded to them. *Excludes all bolt-on items attached with either conventional or huck bolts.*

## 2.13 Glider

A glider is a vehicle that may be ordered without major components. Coverage includes all components identified on the build specification.

## 2.14 Hybrid Transmission - Eaton

Eaton requires that only hybrid-authorized dealerships work on units equipped with Eaton hybrid parts. Pre-authorization is required prior to repair of these vehicles in order to obtain technical assistance and a pre-authorization number for replacement parts. Eaton hybrid parts will be shipped directly from Eaton and will not be stocked in the Parts Distribution Centers (PDCs) due to the short shelf life and low volume. The following hybrid parts are covered under this Warranty: power electronics carrier (PEC), motor generator, inverter, AC/DC converter, hybrid control module (HCM), transmission control module (TCM), clutch, and electronic clutch actuator (ECA). Coverage does NOT include oil cooler or cooling systems. Please reference Roadranger Warranty Guide TCWY0900 for more information on complete listing of limits and exclusions, as well as terms and conditions.

## 2.15 Off-Road On-Site Assistance (Mining and Quarry Applications Only)

Coverage is exclusively available for off-road vehicles that are prohibited from use on public streets. Verify coverage on the *Coverage Information* screen in OWL; coverage will display as a separate category. Coverage includes on-site assistance and/or equipment transportation to the nearest Authorized Service Location for a warrantable repair. If the customer requests towing to a location beyond the distance to the nearest Authorized Service Location, the customer will be responsible for the additional charges.

DISCLAIMER: Failure to read or distribute this information does not provide exemption from compliance with the information contained herein. Specifications are subject to change without notice. Intended for general information only, not offered as customer's Warranty.

# Coverage Descriptions

Based on a unit's specifications, New Product Limited Warranty (Warranty) coverage applies. For unit-specific coverage information (time/distance amounts and component descriptions), enter a product serial number or vehicle identification number (VIN) on the *Check Info/Check Coverage* screen in Online Warranty Link (OWL). Use time and distance tables in conjunction with the coverage description paragraphs; if a coverage is applicable, it will be included as a row in the table.

## 2.1 Axles

### Front/Steer Axle

#### Detroit

A front/steer axle can be a front powered or non-powered axle. Coverage includes all axle components supplied/manufactured by Detroit Diesel Corporation (Detroit). Warrantable components could include, but not be limited to, I-beam, steering knuckles, differential on drive steer axle, spindles, tie rod ends, kingpins, kingpin bearings, and steering arms. *Excluded components could include, but not be limited to, wheel end equipment and steering linkage components.*

#### Non-Detroit

A front/steer axle can be a front powered or non-powered axle. Coverage applies to factory-installed axles and includes I-beam, steering knuckles, differential on drive steer axle, spindles, kingpins, kingpin bearings, and steering arms. *Excludes wheel end equipment, tie rod ends, steering linkage components, driveline(s), U-joints, kingpin bushings, kingpin seals, tag axle(s), pusher axle(s), and any axle installed by a service location or body builder.*

### Pusher Axle

A pusher axle is a non-driven, weight-bearing axle that can be raised when not required to bear a portion of the load. Since the pusher axle can be of many different configurations, Warranty coverage applies to factory-installed axles and includes all components included in the individual build specification of each individual application. *Excludes any axle installed by a service location or body builder.*

### Rear Axle

#### Detroit

A rear axle could be a drive, non-drive, or tandem axle. Coverage includes all axle components supplied/manufactured by Detroit. Warrantable components could include, but not be limited to, axle housing, carrier assembly, differential assembly, power divider, axle shafts, and gaskets and seals. *Excluded components could include, but not be limited to, suspension and torque rod brackets, tie rod ends, wheel end equipment, wiring, yokes, and attaching hardware.*

---

DISCLAIMER: Failure to read or distribute this information does not provide exemption from compliance with the information contained herein. Specifications are subject to change without notice. Intended for general information only, not offered as customer's Warranty.

## Non-Detroit

A rear axle could be a drive, non-drive, or tandem axle. Coverage applies to factory-installed axles and includes axle housing, carrier assembly, differential assembly, power divider, axle shafts, and gaskets and seals. *Excludes suspension and torque rod brackets, tie rod ends, wheel end equipment, wiring, yokes, driveline(s), U-joints, attaching hardware, tag axle(s), pusher axle(s), and any axle installed by a service location or body builder.*

## Tag Axle

A tag axle is a non-driven, continuous weight-bearing axle. Since the tag axle can be of many different configurations, Warranty coverage applies to factory-installed axles and includes all components included in the individual build specification of each individual application. *Excludes any axle installed by a service location or body builder.*

## 2.2 Basic Chassis/Vehicle

**Note:** Basic Chassis applies to Freightliner Custom Chassis Corporation (FCCC) products; Basic Vehicle applies to Freightliner, Western Star, and Thomas Built Bus (TBB) products.

Coverage includes all factory-installed components of the chassis/vehicle that are not excluded elsewhere in the Warranty or described as having a different time, or distance, or hours, or listed separately on each new vehicle coverage table. See the Warranty Manual for a complete list of exceptions and exclusions. Also excluded are components warranted directly by component manufacturer.

## 2.3 Batteries

### Standard Battery

Coverage includes Alliance\* and NorthStar brand batteries only; claims for all other brands must be submitted directly to the supplier. Includes starting battery assemblies and factory-installed auxiliary power unit (APU) battery assemblies. *Excludes non-Alliance and non-NorthStar brand batteries, battery cables, battery mounting box, and hardware.*

### Cranking Battery Only

Coverage includes Alliance\* or NorthStar brand batteries only; claims for all other brands must be submitted directly to the supplier. Cranking battery warranty includes factory-installed cranking (starter) battery assemblies only. *Excludes APU battery assemblies, non-Alliance and non-NorthStar brand batteries, battery cables, battery mounting box, and hardware.*

### Auxiliary Battery Only

Coverage includes Alliance\* or NorthStar brand batteries only; claims for all other brands must be submitted directly to the supplier. Auxiliary battery warranty includes factory-installed APU battery assemblies only. *Excludes cranking (starter) battery assemblies, non-Alliance and non-NorthStar brand batteries, battery cables, battery mounting box, and hardware.*

\*Detroit brand batteries of the same group and amperage are interchangeable with Alliance brand batteries and carry the same coverage period.

DISCLAIMER: Failure to read or distribute this information does not provide exemption from compliance with the information contained herein. Specifications are subject to change without notice. Intended for general information only, not offered as customer's Warranty.

# Time and Distance Tables

## 1.1 Western Star Vocational (Orders Placed On or After 03/08/2013)

Vocational coverage is available for vehicles in these vocations:		Any
Category Determinants		
Road Surface - most severe in-transit between sites	Up to 30% off-highway rough, maintained concrete/asphalt; maintained gravel/crushed rock; maintained dirt or soft soil (Class C or D roads) <sup>1</sup>	
Gross Combined Weight Rating	140,000 lb/63 505 kg or less -Doubles on NY turnpikes are rated 143,000 lb -Doubles on FL turnpikes are rated 147,000 lb	
Axles and Manufacturer's Gross Vehicle Weight Rating		
2-Axle Unit	Over 48,000 lb/21 772 kg	
3-Axle Unit	Over 68,000 lb/30 844 kg	
4-Axle Unit	Over 88,000 lb/39 916 kg	
5-Axles or More	Over 98,000 lb/44 452 kg	

<sup>1</sup> Class C roads have a natural surface and may be either constructed or established over time by repeated passage of vehicles. The natural surface may be dirt, sand, or rock. A minimal amount of maintenance, if any at all, is limited primarily to spot surface grading to allow vehicle passage within the original road corridor. Class D roads are primitive roads that were not constructed but have been established over time by the passage of motor vehicles. These roads receive no maintenance or grading.

<b>Coverage<sup>2</sup></b>		
Description	Time <sup>3</sup>	Distance <sup>3</sup>
Basic Vehicle	1 Year	Unlimited
Battery	1 Year	100,000 mi/161 000 km
Brightwork	6 Months	Unlimited
Cab Corrosion/Perforation	5 Years	Unlimited
Cab Structure	5 Years	Unlimited
Corrosion	6 Months	Unlimited
Crossmembers	5 Years	Unlimited
Emission Regulations <sup>4</sup>		
Diesel Emission 2010 <sup>5</sup>	5 Years	100,000 mi/161 000 km
GHG14/17 <sup>6</sup> (Medium Heavy Duty to Heavy Heavy Duty Trucks/Tractors)	5 Years	100,000 mi/161 000 km
GHG14/17 <sup>6</sup> Tire (File Direct)	2 Years	24,000 mi/38 400 km
Frame Rails	5 Years	Unlimited
Front/Steer Axle <sup>7</sup>		
Detroit <sup>8</sup>	3 Years	300,000 mi/483 000 km
Non-Detroit	2 Years	100,000 mi/161 000 km
Paint	1 Year	100,000 mi/161 000 km
Paint, Chassis	6 Months	Unlimited
Rear Axle <sup>9</sup>		
Detroit <sup>8</sup>	3 Years	300,000 mi/483 000 km
Non-Detroit	2 Years	100,000 mi/161 000 km
Towing/Roadside Assistance <sup>10</sup>	1 Year	Unlimited
Transfer Case	2 Years	100,000 mi/161 000 km

DISCLAIMER: Failure to read or distribute this information does not provide exemption from compliance with the information contained herein. Specifications are subject to change without notice. Intended for general information only, not offered as customer's Warranty.

Coverage <sup>2</sup>		
Description	Time <sup>3</sup>	Distance <sup>3</sup>
Transmission <sup>11</sup>		
Detroit DT-12 <sup>8</sup>	5 Years	750,000 mi/1 200 000 km
Non-Detroit	2 Years	100,000 mi/161 000 km

<sup>2</sup> Because Warranty coverage is determined by a unit's specifications, gross combination weight rating, road surface, and vocation, coverage may vary. For unit-specific coverage, Dealers should enter a product serial number or vehicle identification number on the *Coverage Info* screen in OWL; for customers without access to OWL, see ordering Dealer for more information.

<sup>3</sup> Time or distance, whichever comes first.

<sup>4</sup> See *Emission Regulations* subsection that follows or separate engine owner's manual for regulatory information.

<sup>5</sup> Applies to vehicles equipped with EPA 2010 compliant diesel engines.

<sup>6</sup> Applies to models 2013 and later domiciled in the United States and Canada.

<sup>7</sup> Customers will have only one (1) type of front/steer axle coverage, either Detroit or non-Detroit, depending on how the unit is spec'd. Front axle coverage is also applicable to gliders.

<sup>8</sup> Access Detroit parchments at *DTNACONnect > Warranty Lit > Coverages > Detroit*; for customers without access, see ordering Dealer for more information.

<sup>9</sup> Customers will have only one (1) type of rear axle coverage, either Detroit or non-Detroit, depending on how the unit is spec'd.

<sup>10</sup> Up to a maximum of \$550 per occurrence.

<sup>11</sup> Customers will have only one (1) type of transmission coverage, either Detroit or non-Detroit, depending on how the unit is spec'd.

DISCLAIMER: Failure to read or distribute this information does not provide exemption from compliance with the information contained herein. Specifications are subject to change without notice. Intended for general information only, not offered as customer's Warranty.



A DIVERSITY COMPANY

WE NEVER STOP WORKING FOR YOU

## HEIL ENVIRONMENTAL WARRANTY STATEMENT

The Heil Co. d/b/a Heil Environmental ("Heil") warrants its waste collection equipment to be free from defects in material and workmanship under normal single-shift use for a period of Twelve (12) months or 2000 hours of operation (whichever comes first) from the date of equipment In-Service or during the period of coverage offered by an extended warranty program, when operated in accordance with its *Operator's Manual* and proper service and maintenance as described in Heil *Service Bulletins* and *Parts & Service Manuals* are performed. The standard or extended equipment warranty is not transferable except for sales demonstration units.

This warranty is expressly limited to the repair or replacement of any component or part thereof, of any such collection body manufactured by Heil that is proven to Heil's satisfaction to have been defective in material or workmanship. Such components or parts shall be repaired or replaced at Heil's option without cost to the original purchaser for parts and labor provided such unit is returned to an authorized Heil Dealer for replacement or repair. The repair or replacement must be made during the standard or extended warranty coverage period.

Before any warranty can be allowed on new equipment, a validated warranty registration form must be on file with Heil's Customer Service Department within sixty (60) days of the equipment's In-Service date. Wear items are excluded from warranty coverage.

All OEM service parts sold by Heil have a six (6) month warranty from the date of purchase. Aftermarket parts purchased from Heil are supported by a 90-day warranty. The parts warranty covers parts only, providing that factory inspection reveals a defect in material or workmanship. Labor, troubleshooting, equipment downtime, etc. is not covered under the parts warranty policy.

**HEIL MAKES NO OTHER WARRANTY, EXPRESSED OR IMPLIED, AND MAKES NO WARRANTY OF MERCHANTABILITY OR OF FITNESS FOR ANY PARTICULAR PURPOSE. HEIL DOES NOT ASSUME ANY LIABILITY OR ACCEPT CLAIMS FOR LOSS OF PROFITS, PRODUCT DOWN TIME OR ANY OTHER DIRECT, INCIDENTAL OR INDIRECT CONSEQUENTIAL LOSSES, COSTS, DAMAGES, OR DELAYS.**

Any improper use, operation beyond rated equipment or component capacity, substitution of parts that are not Heil approved, or any alteration or repair by others in such a manner as in Heil's sole judgment affect the product operation or integrity shall void the warranty. Other than the extension of the standard warranty period purchased under a supplemental *Heil Extended Warranty Program*, no employee or representative is authorized to modify this warranty in any way nor shall any other warranties be granted. No dealer-supplied warranty program is endorsed or supported by Heil. Heil retains the right to modify its factory warranty program at any time.



**Environmental  
Solutions Group**





a **sanborn** company

**WE NEVER STOP WORKING FOR YOU**

## **HEIL ENVIRONMENTAL WARRANTY STATEMENT**

The Heil Co. d/b/a Heil Environmental ("Heil") warrants its waste collection equipment to be free from defects in material and workmanship under normal single-shift use for a period of Twelve (12) months or 2000 hours of operation (whichever comes first) from the date of equipment In-Service or during the period of coverage offered by an extended warranty program, when operated in accordance with its *Operator's Manual* and proper service and maintenance as described in Heil *Service Bulletins* and *Parts & Service Manuals* are performed. The standard or extended equipment warranty is not transferable except for sales demonstration units.

This warranty is expressly limited to the repair or replacement of any component or part thereof, of any such collection body manufactured by Heil that is proven to Heil's satisfaction to have been defective in material or workmanship. Such components or parts shall be repaired or replaced at Heil's option without cost to the original purchaser for parts and labor provided such unit is returned to an authorized Heil Dealer for replacement or repair. The repair or replacement must be made during the standard or extended warranty coverage period.

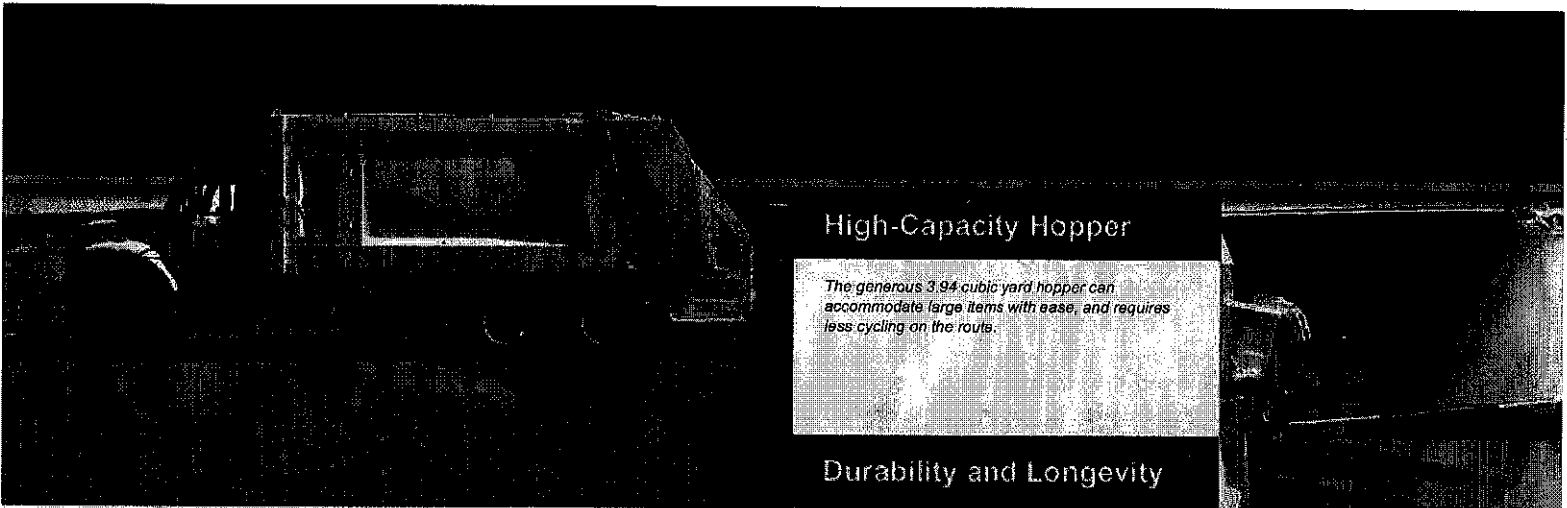
Before any warranty can be allowed on new equipment, a validated warranty registration form must be on file with Heil's Customer Service Department within sixty (60) days of the equipment's In-Service date. Wear items are excluded from warranty coverage.

All OEM service parts sold by Heil have a six (6) month warranty from the date of purchase. Aftermarket parts purchased from Heil are supported by a 90-day warranty. The parts warranty covers parts only, providing that factory inspection reveals a defect in material or workmanship. Labor, troubleshooting, equipment downtime, etc. is not covered under the parts warranty policy.

**HEIL MAKES NO OTHER WARRANTY, EXPRESSED OR IMPLIED, AND MAKES NO WARRANTY OF MERCHANTABILITY OR OF FITNESS FOR ANY PARTICULAR PURPOSE. HEIL DOES NOT ASSUME ANY LIABILITY OR ACCEPT CLAIMS FOR LOSS OF PROFITS, PRODUCT DOWN TIME OR ANY OTHER DIRECT, INCIDENTAL OR INDIRECT CONSEQUENTIAL LOSSES, COSTS, DAMAGES, OR DELAYS.**

Any improper use, operation beyond rated equipment or component capacity, substitution of parts that are not Heil approved, or any alteration or repair by others in such a manner as in Heil's sole judgment affect the product operation or integrity shall void the warranty. Other than the extension of the standard warranty period purchased under a supplemental *Heil Extended Warranty Program*, no employee or representative is authorized to modify this warranty in any way nor shall any other warranties be granted. No dealer-supplied warranty program is endorsed or supported by Heil. Heil retains the right to modify its factory warranty program at any time.





## High-Capacity Hopper

The generous 3.94 cubic yard hopper can accommodate large items with ease, and requires less cycling on the route.

## Durability and Longevity

Our exclusive fully welded, interlaced subframe provides exceptional longevity, while resisting abrasion, corrosion, and salt damage. The body is constructed of 7- to 8-gauge high tensile strength steel, while the hopper features 5/16-inch thick AR400 steel on the floor and 3/16-inch thick AR400 steel on the sides for superior strength and durability.

## More Packing Power

Heil's Linkage Packing System has been a proven performer. It has no rollers, slides, or slide shoes to wear out. Smaller cylinders deliver considerably more packing power for increased payloads.

## Service Smart™ Side Door

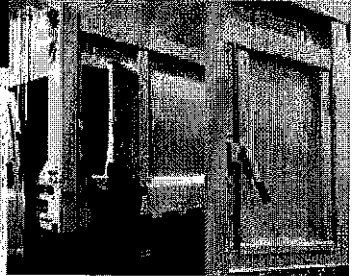
Our Service Smart™ design simplifies routine maintenance and keeps you away from the shop and out servicing your customers — and making money. The side door provides easy access for common maintenance tasks.

## Reliable Real Loader Performance

The DuraPack® 5000 was specifically designed to maximize your time on daily collection routes.

- **Solid Foundation** — The interlaced subframe provides exceptional strength and durability, which means your DuraPack 5000 will enjoy a long lifespan.
- **Time-Saver** — The DuraPack 5000 features a flat, abrasion-resistant steel floor, which eliminates the messy job of cleaning trash buildup out of dirty troughs.
- **Frame-Mounted Oil Tank** — Filter maintenance is easy with an oil tank that is mounted on the frame and includes standard sight gauge and in-cab filter bypass monitors.
- **Superior Filtration** — Our 3-micron filtration system keeps oil cleaner and extends the life of hydraulic components. Other manufacturers use 10-micron filtration, which can allow particulate matter to damage the hydraulic system.
- **One-Handed Manual Packing** — Convenient one-handed manual controls stop, start, or reverse the upper panel or blade at any point in the packing cycle.

Visit [www.heil.com](http://www.heil.com) to learn more about how  
Heil refuse collection vehicles are  
making a difference around the world.





# DuraPack® 5000

## High-Compaction Rear Loader Product Specifications

### Performance Specifications

Compaction	1000+ lbs. per yd³
Hopper Size	3.94 yd³
Packing Cycle Time	18-18 seconds*
Reload Time	6-8 seconds*

\* with fast cycle pump option

All designs, specifications, and components are subject to change at the manufacturer's sole discretion at any time without notice. Data published herein is for information purposes only and shall not be construed to warrant suitability of the unit for any particular purpose, as performance may vary with the conditions encountered. The only warranty is our standard written Warranty Statement for this product at the time of shipment.

### Hydraulic Specifications

<b>PUMP</b>	
Type	High pressure gear
Maximum Operating Pressure	2,500 psi
GPM	42 GPM
<b>OIL RESERVOIR</b>	
Tank Capacity (net)	50 gallons (190 liters)
Filters	3 micron return filter with in-cab filter monitor; 140 micron suction line
<b>VALVES</b>	
Shutoff	Ball valve in suction line between pump and reservoir
Packing Control	Spool type
Ejector and Tailgate Raise	Spool type

### Tailgate Specifications

Hopper Capacity	yd³	3.94
Sill Height Below Chassis Frame	in.	3.8
Hopper Loading Width	in.	80
Hopper Opening Height	in.	55
Cycle Time (seconds)	complete	18-18

### Chassis Requirements

		18 yd³	20 yd³	25 yd³	27 yd³	32 yd³
Minimum GVWR		48,000	51,000	54,000	57,000	62,000
Minimum GAWR	Conventional	rear 36,000	38,000	40,000	42,000	46,000
	Cab-Over-Engine	rear 34,000	35,000	38,000	40,000	44,000
Usable CA	mm	N/A	N/A	N/A	N/A	N/A
Usable CT	mm	2,473	3,200	3,962	4,242	5,004
Minimum AF	mm	813	1,285	1,295	1,295	1,295

(1) Any chassis sent to Heil Environmental with less than these minimum GVWR/GAWRs will not be mounted.

(2) If CA/CT is not as recommended, contact Heil Environmental for applicable weight distribution and GVWR/GAWR requirements.

(3) Usable CT shown plus a 50" overhang with an 8" forward mount and a 3" aft clearance.

### Body Specifications

		18 yd³	20 yd³	25 yd³	27 yd³	32 yd³
Body Capacity	yd³	18	20	25	27	32
Overall Length	in.	225	235	270	292	310
Overall Length with Tailgate Raised	in.	275	285	320	332	360
Overall Width	in.	96				
Overall Height Above Frame	in.	95				
Overall Height with Tailgate Raised	in.	207				
Gross Weight (approximate)	lbs.	14,300	14,800	15,500	15,900	17,200

### Cylinder Specifications

Body Cylinders	Type	Model	Stages	Bore
Tailgate Raise	Single Acting	ALL	1	mm 102
Packer Blade	3-Stage Double Acting Telescopic	ALL	4	mm 140
Upper Panel	Double Acting	ALL	1	mm 127
Ejection	Double Acting	18, 20, 25, 27 yd³	4	mm 152
		32 yd³	5	mm 175

CONTACT YOUR LOCAL DEALER



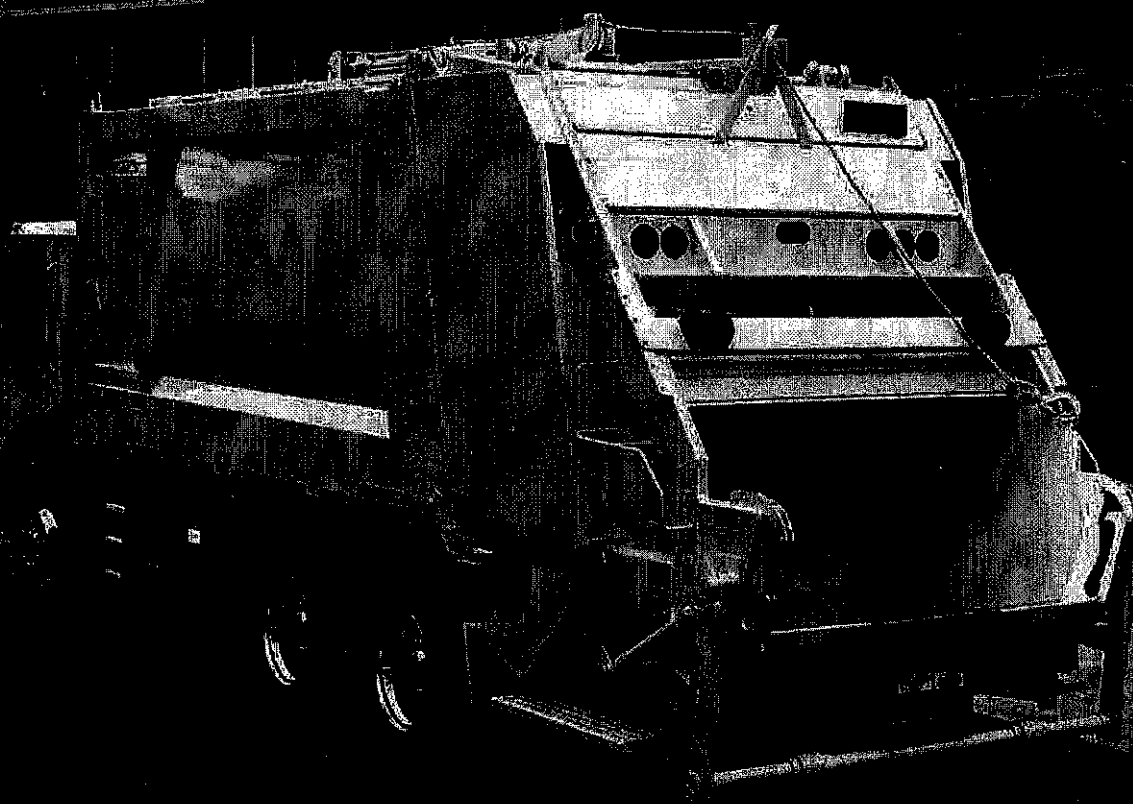
2030 Hamilton Place Blvd., Suite 200, Chattanooga, TN 37421  
866.FOR.HEIL (866.367.4345) • Fax: 423.855.3478  
www.heil.com

© 2011, Heil Environmental, Printed in the U.S.A.  
FORM #SWS-000012-113011



# DuraPack® 5000

High-Compaction Rear Loader



# DuraPack® 5000

The unrivaled workhorse of the industry.

With over 20,000 built and nearly 30 years of reliability, Heli's **DuraPack 5000** high-compaction refuse vehicle has become the mainstay of collection fleets, from small independent haulers to the world's largest municipal fleet.

**Engineered to last.** The **DuraPack 5000** features Heli's DP body, the only fully welded, interlaced subframe in a refuse collection truck. With formed channels for extra strength, high tensile strength steel to maximize performance at a minimum weight, and full welding for superior resistance to corrosion and cracking, the **DuraPack 5000** is a sturdy package with the stamina to absorb years of tough hauling.

**Outstanding weight distribution.** But our engineers still weren't satisfied. Their search for perfection led them to discover a way to create outstanding weight distribution and reduce

wear on rearward chassis components. They incorporated a high cylinder mount into a compact design with a short overhang to maximize forward loading of both the body and the payload.

**Easy to operate.** The **DuraPack 5000** is as functional as it is durable. Operators around the world appreciate the convenient one-handed manual packing controls that enable them to stop, start, or reverse either the upper panel or the blade at any point in the packing cycle. With a simple two-step cycle that reloads in just 6 to 8 seconds, and a complete cycle time of 16 to 18 seconds, it gets them through their routes quickly.

To add the **DuraPack 5000** to your fleet, contact your local Authorized Heli Dealer. To find the Dealer nearest you, visit [www.heli.com](http://www.heli.com).



*Environmental Equipment Experts...Since 1979*

May 28, 2019

City of Laurel

RE: Trade-In Offer – Heil DP5000 25CY on Western Star

Dear Gentlemen:

Ingram Equipment Company, LLC ("Ingram") hereby offers a trade-in value of **\$119,000.00 (One Hundred Nineteen Thousand and 00/100 Dollars)** for the rear loader garbage truck as identified in our attached bid.

Notwithstanding the foregoing, Ingram's offer is contingent upon the return of the Equipment by the City of Laurel, Mississippi, at the time of new equipment purchase from Ingram Equipment, in full and complete satisfaction of and compliance with all of the "Equipment Trade-In Terms, Conditions and Limitations" which are attached to this letter. This offer is good up to three (3) years after purchase of quoted equipment.

Thank you very much.

Sincerely,

**Ingram Equipment Company, LLC**

By: Jeff Martin  
President

<b>CUSTOMER</b>	CITY OF LAUREL	<b>Contractor:</b>	INGRAM EQUIPMENT COMPANY, LLC
<b>CONTACT</b>		<b>Prepared By:</b>	JEFF MARTIN
<b>PHONE/FAX</b>		<b>Salesman:</b>	ERIC SMITH
<b>CITY, STATE</b>	LAUREL, MISSISSIPPI		
<b>DATE</b>	5/23/19	<b>Quote Expires in 30 Days</b>	

QTY.	DESCRIPTION	OPTION:	ADD TO PRICE BELOW IF DESIRED
1	HEIL DP5000 25CY REAR LOADER	1.	SERVICE AGREEMENT (BODY ONLY) \$ 3,495.00
	INSTALLATION	2.	SERVICE AGREEMENT (BODY & CHASSIS) \$ 5,895.00
	REMOTE MOUNT PUMP		<i>Prices above is per unit per year</i>
	HOT SHIFT PTO W/OVERSPEED PROTECTION		<i>90 Day Cycle - See attached for Details</i>
	TAILGATE STROBE LIGHT		
	DUAL TAILGATE BUZZERS		
	1/4" HOPPER FLOOR		
	15,000 LB. REEVING CYLINDER		
	LIP & LATCH KIT		
	REAR VISION CAMERA SYSTEM		
	TWO (2) YEAR BODY WARRANTY		
	PAINT: WHITE		

<b>Subtotal A.</b>		<b>\$ 212,743.00</b>
--------------------	--	----------------------

	F.O.B. POINT	LAUREL, MS	INCLUDED
Subtotal B:			\$ 212,743.00

Subtotal E: \$		-
----------------	--	---

		<b>TOTAL NET DELIVERED</b>	<b>\$ 212,743.00</b>
--	--	----------------------------	----------------------

**Net at Delivery**